

TECHNICAL MANUAL

DIRECT SUPPORT AND GENERAL SUPPORT

MAINTENANCE

REPAIR PARTS AND SPECIAL TOOLS LISTS

(INCLUDING DEPOT MAINTENANCE REPAIR

PARTS

AND SPECIAL TOOLS)

FOR

CAMERA SETS STILL PICTURE

KS-19A4 (NSN 6720-00-144-6812)

AND

KS-19B (NSN 6720-00-192-9569)

HEADQUARTERS DEPARTMENT OF THE ARMY
JANUARY 1978

DIRECT SUPPORT AND GENERAL SUPPORT MAINTENANCE

REPAIR PARTS AND SPECIAL TOOLS LISTS

(INCLUDING DEPOT MAINTENANCE REPAIR PARTS

AND SPECIAL TOOLS)
FOR

CAMERA SETS, STILL PICTURE

KS-19A4 (NSN 6720-00-144-6812)

AND

KS-19B (NSN 6720-00-192-9569)

Current as of 16 September 1977

REPORTING OF ERRORS

You can improve this manual by recommending improvements using DA Form 2028-2 (Test) located in the back of the manual. Simply tear out the self-addressed form, fill it out as shown on the sample, fold it where shown, and drop it in the mail.

If there are no blank DA Forms 2028-2 (Test) in the back of your manual, use the standard DA Form 2028 (Recommended Changes to Publications and forward to the Commander, US Army Electronics Command, ATTN: DRSEL-MA-Q, Fort Monmouth, New Jersey 07703.

In either case a reply will be furnished direct to you.

Table of Contents

SECTION		Page	Illu Figure
	I. Introduction	1	
	II. Repair parts list.....	5	
GROUP	00 Camera Sets, Still Picture KS-19A4. KS-19B.....	5	1-5
	01 Camera assembly.....	15	6
	0101 Camera back assembly.....	17	7
	010101 Door assembly.....	19	8,9
	02 Lens and shutter assembly.....	23	10
	03 Strobe assembly.....	27	11-16
	04 Battery charger, external	39	17,18
SECTION	III. Special tools list (Not applicable)		
	IV. National stock number and part number index.....	42	

*This manual supersedes TM 11-6720-248-35P, 18 May 1972.

SECTION I

INTRODUCTION

1. Scope

This manual lists spares and repair parts; special tools; special test, measurement, and diagnostic equipment (TMDE), and other special support equipment required for performance of direct support and general support maintenance of the KS-19A4 and KS-19B. It authorizes the requisitioning and issue of spares and repair parts as indicated by the source and maintenance codes.

2. General

This Repair Parts and Special Tools List is divided into the following sections:

a. Section II. Repair Parts List. A list of spares and repair parts authorized for use in the performance of maintenance. The list also includes parts which must be removed for replacement of the authorized parts. Parts lists are composed of functional groups in numeric sequence, with the parts in each group listed in figure and item number sequence.

b. Section III. Special Tools List. Not applicable.

c. Section IV. National Stock Number and Part Number Index. A list, in National item identification number (NIIN) sequence, of all National stock numbers (NSN) appearing in the listings, followed by a list, in alphameric sequence, of all part numbers appearing in the listings. National stock numbers and part numbers are cross-referenced to each illustration figure and item number appearance.

3. Explanation of Columns

a. Illustration. This column is divided as follows:

(1) Figure number. Indicates the figure number of the illustration on which the item is shown.

(2) Item number. The number used to identify item called out in the illustration.

b. Source, Maintenance, and Recoverability (SMR) Codes.

(1) Source code. Source codes indicate the manner of acquiring support items for maintenance, repair, or overhaul of end items. Source codes are entered in the first and second positions of the Uniform SMR Code format as follows:

Code	Definition
PA--	Item procured and stocked for anticipated or known usage.
XD-A	support item that is not stocked. When required,

Code

Definition

item will be procured thruough normal supply channels.

NOTE

Cannibalization or salvage may be used as a source coded above except those coded XA and aircraft support items as restricted by AR 700-42.

(2) Maintenance code. Maintenance codes are assigned to indicate the levels of maintenance authorized to USE and REPAIR support items. The maintenance codes are entered in the third and fourth positions of the Uniform SMR Code format as follows:

(a) The maintenance code entered in the third position will indicate the lowest maintenance level authorized to remove, replace, and use the support item. The maintenance code entered in the third position will indicate one of the following levels of maintenance:

Code	Application /Explanation
O-Support	item is removed, replaced, used at the organizational level.
F-Support	item is removed, replaced, used at the direct support level.
H-Support	item is removed, replaced, used at the general support level.

(b) The maintenance code entered in the fourth position indicates whether the item is to be repaired and identifies the lowest maintenance level with the capability to perform complete repair (i.e., all authorized maintenance functions). This position will contain one of the following maintenance codes:

Code	Application /Explanation
O-The lowest	maintenance level capable of complete repair of the support item is the organizational level.
F-The lowest	maintenance level capable of complete repair of the support item is the direct support level.
H-The lowest	maintenance level capable of complete repair of the support item is the general support level.
Z-Nonreparable.	No repair is authorized.

(3) Recoverability code. Recoverability codes are assigned to support items to indicate the disposition action on unserviceable items. The recoverability code is entered in the fifth position of the Uniform SMR Code format as follows:

Recoverability
codes

Definition

Z--Nonreparable item. When unserviceable, condemn and dispose at the level indicated in position 3.

F-Reparable item. When uneconomically reparable, condemn and dispose at the direct support level.

H-Reparable item. When uneconomically reparable, condemn and dispose at the general support level.

D-Reparable item. When beyond lower level repair capability, return to depot. Condemnation and disposal not authorized below depot level.

c. National Stock Number. Indicates the National number assigned to the item and will be used for requisitioning purposes.

d. Part Number. Indicates the primary number used by the manufacturer (individual, company, firm, corporation, or Government activity), which controls the design and characteristics of the item by means of its engineering drawings, specifications, standards, and inspection requirements to identify an item or range of items.

NOTE

When a stock numbered item is requisitioned, the repair part received may have a different part number than the part being replaced.

e. Federal Supply Code for Manufacturer (FSCM) The FSCM is a 5-digit numeric code listed in SB 708-42 which is used to identify the manufacturer, distributor, or Government agency, etc.

f. Description. Indicates the Federal item name and, if required, a minimum description to identify the item.

g. Unit of Measure (U/M) Indicates the standard of the basic quantity of the listed item as used in performing the actual maintenance function. This measure is expressed by a two-character alphabetical abbreviation (e.g., ea, in, pr, etc). When the unit of measure differs from the unit of issue, the lowest unit of issue that will satisfy the required units of measure will be requisitioned.

h. Quantity Incorporated in Unit. Indicates the quantity of the item used in the breakout shown on the illustration figure, which is prepared for a functional group, subfunctional group, or an assembly.

4. Special Information

a. Usable on codes are shown in the description column. Uncoded items are applicable to all models. Identification of the usable on codes used in this publication are:

Code	Used on
2GH	KS-19A4
AJU	KS-19B

b. The following publications pertain to the KS-19A4 and KS-19B and its components:

TM 11-6720-248-12, Camera Sets, Still Picture KS-19A4 and KS-19B

TM 11-6720-248-35, Camera Sets, Still Picture KS-19A4 and KS-19B.

TM 11-6720-248-35, Camera Sets, Still Picture KS-19A4 and KS-19B

5. How to Locate Repair Parts

a. When National stock number or part number is unknown.

(1) First. Using the table of contents, determine the functional group within which the item belongs. This is necessary since illustrations are prepared for functional groups and listings are divided into the same groups.

(2) Second. Find the illustration covering the functional group to which the item belongs.

(3) Third. Identify the item on the illustration and note the illustration figure and item number of the item.

(4) Fourth. Using the Repair Parts Listing, find the figure and item number noted on the illustration.

b. When National stock number or part number is known.

(1) First. Using the Index of National Stock Numbers and Part Numbers, find the pertinent National stock number or part number. This index is in NIIN sequence followed by a list of part numbers in alphameric sequence, cross-referenced to the illustration figure number and item number.

(2) Second. After finding the figure and item number, locate the figure and item number in the repair parts list.

6. Abbreviations

Not applicable.

(Next printed page is 4)

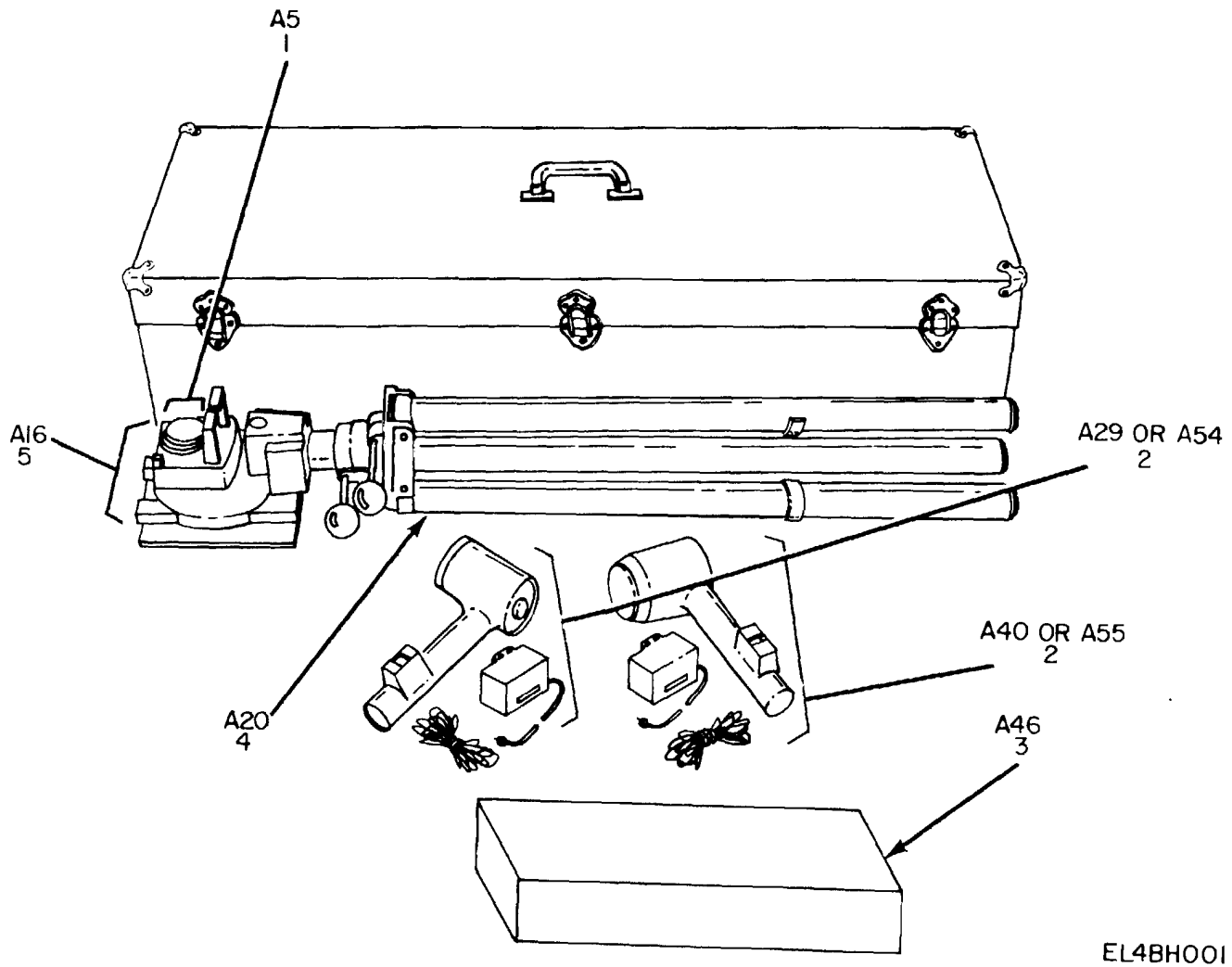
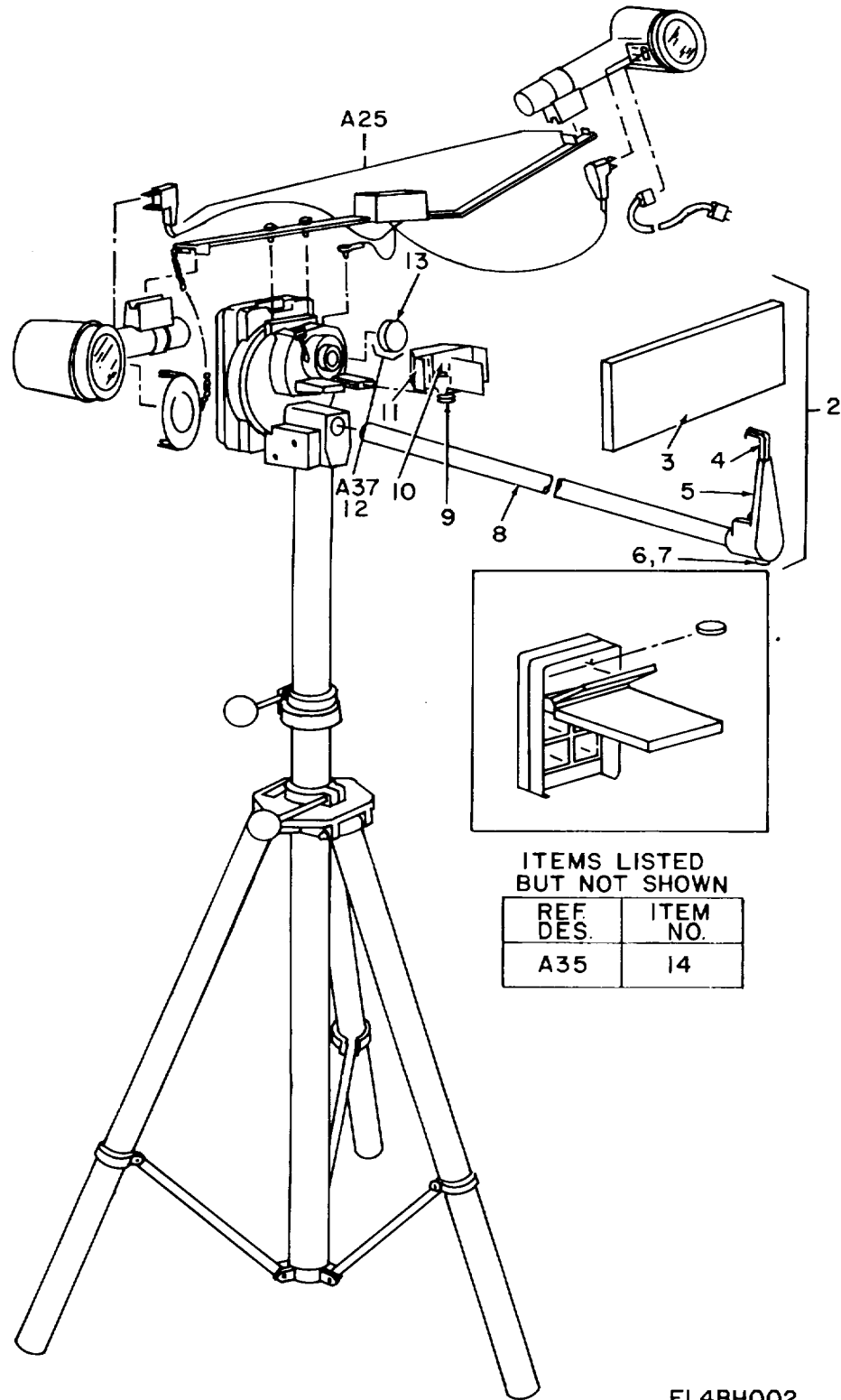


Figure 1. Camera Sets, Still Picture KS 19A4 and KS-19B.

SECTION II

TM11-6720-248-34P

(1) ILLUSTRATION		(2)	(3)	(4)	(5)	(6) DESCRIPTION	(7)	(8)
(a) FIG NO.	(b) ITEM NO.	SMR CODE	NATIONAL STOCK NUMBER	PART NUMBER	FSCM	USABLE ON CODE	U/M	QTY INC IN UNIT
						GROUP 00 CAMERA SETS, STILL PICTURE KS-19A4 AND KS-19B		
1	1	XDOHD		588-269	99176	LENS AND SHTR ASSY	EA	1
1	2	PAOHD	6760-00-258-2061	588-036	99176	STROBE ASSEMBLY..... AJL	EA	2
1	2	PAOHD	6760-00-554-4770	588-198	99176	STROBE ASSEMBLY..... 2CF	EA	2
1	3	XDOFF		588-034	99176	CHARGER ASSY, BTRY..... AJU	EA	1
1	4	PACFF	6760-00-760-6151	588-115	99176	TRIPOD ASSEMBLY.....	EA	1
1	5	PAOFF	6720-00-177-5134	588-291-1	99176	CAMERA ASSEMBLY.....	EA	1



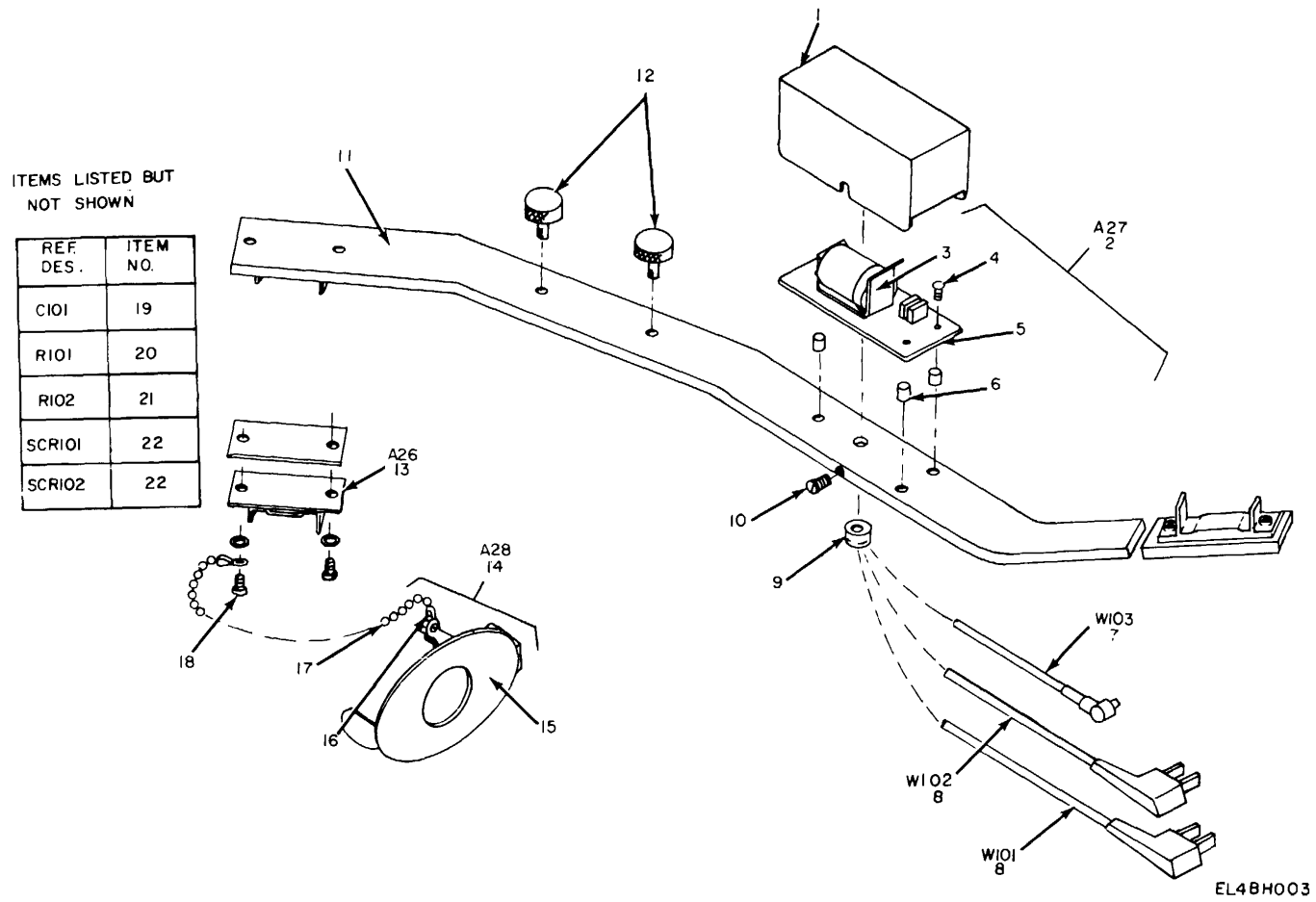
EL4BH002

Figure 2. Camera Sets, Still Picture KS-19A4 and KS-19B, Assembled View.

SECTION II

TM11-6720-248-34P

(1) ILLUSTRATION		(2)	(3)	(4)	(5)	(6) DESCRIPTION	(7)	(8)
(a) FIG NO.	(b) ITEM NO.	SMR CODE	NATIONAL STOCK NUMBER	PART NUMBER	FSCM	USABLE ON CODE	U/M	QTY INC IN UNIT
2	1	PAOFF	6720-00-491-0550	588-218	99176	ARM ASSY,STROBE	EA	1
2	2	XDFFF		588-065	99176	HOLDER ASSY	EA	1
2	3	PAOZZ	6760-00-983-3980	588-144	99176	BOARD,TITLE	EA	6
2	4	XDFZZ		588-066	99161	HOOK	EA	1
2	5	XDFZZ		588-067	99176	BODY	EA	1
2	6	XDFZZ		10-32NF	99176	NUT,HEX.STL CP	EA	1
2	7	XDFZZ		MS35222-63	80063	SCREW.STL CD PL	EA	1
2	8	PAOFF	6760-00-983-3978	588-004	99176	BAR,HORIZ POSN ASSY	EA	1
2	9	PAOZZ	5355-00-953-2324	116A	80813	THUMBSCREW	EA	1
2	10	PAOFF	6720-00-981-8690	001-095	99176	STEROSCOPE,DUAL	EA	1
2	11	XDFZZ		001-090	99176	HOUSING.....	EA	1
2	12	PAOOF	6720-00-432-2335	588-005	99176	CAP AND FILTER ASSY	EA	1
2	13	XDDZZ		588-122	99176	CAP,FILTER.....	EA	1
2	14	XDFZZ		588-018	99176	CONTACTOR ASSY	EA	1



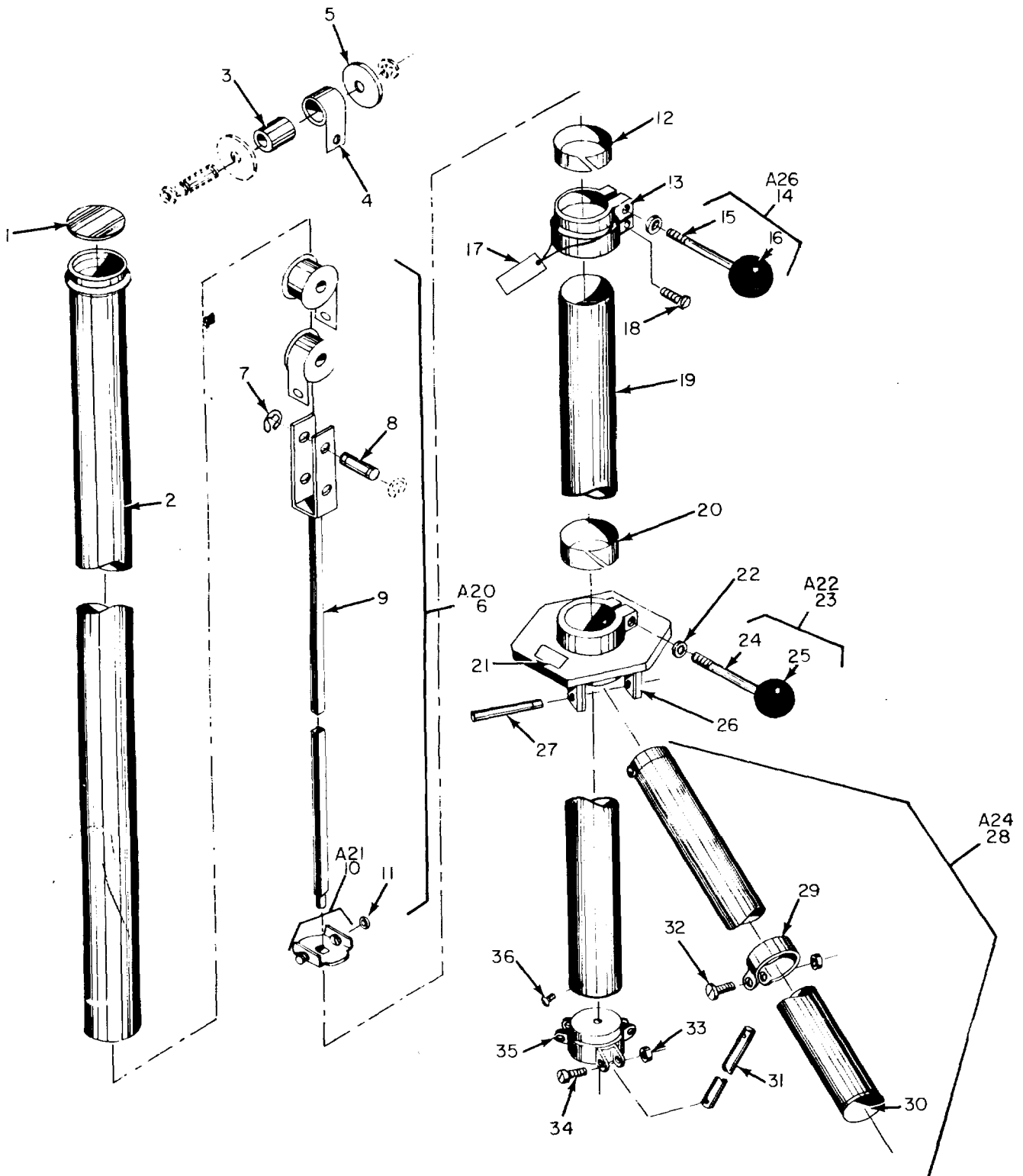
EL4BH003

Figure 3. Camera Sets, Still Picture KS-19A4 and KS-19B, Support Arm Assembly.

SECTION II

TM11-6720-248-34P

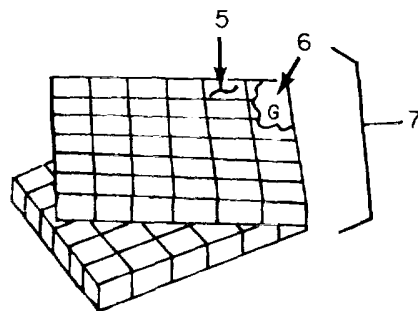
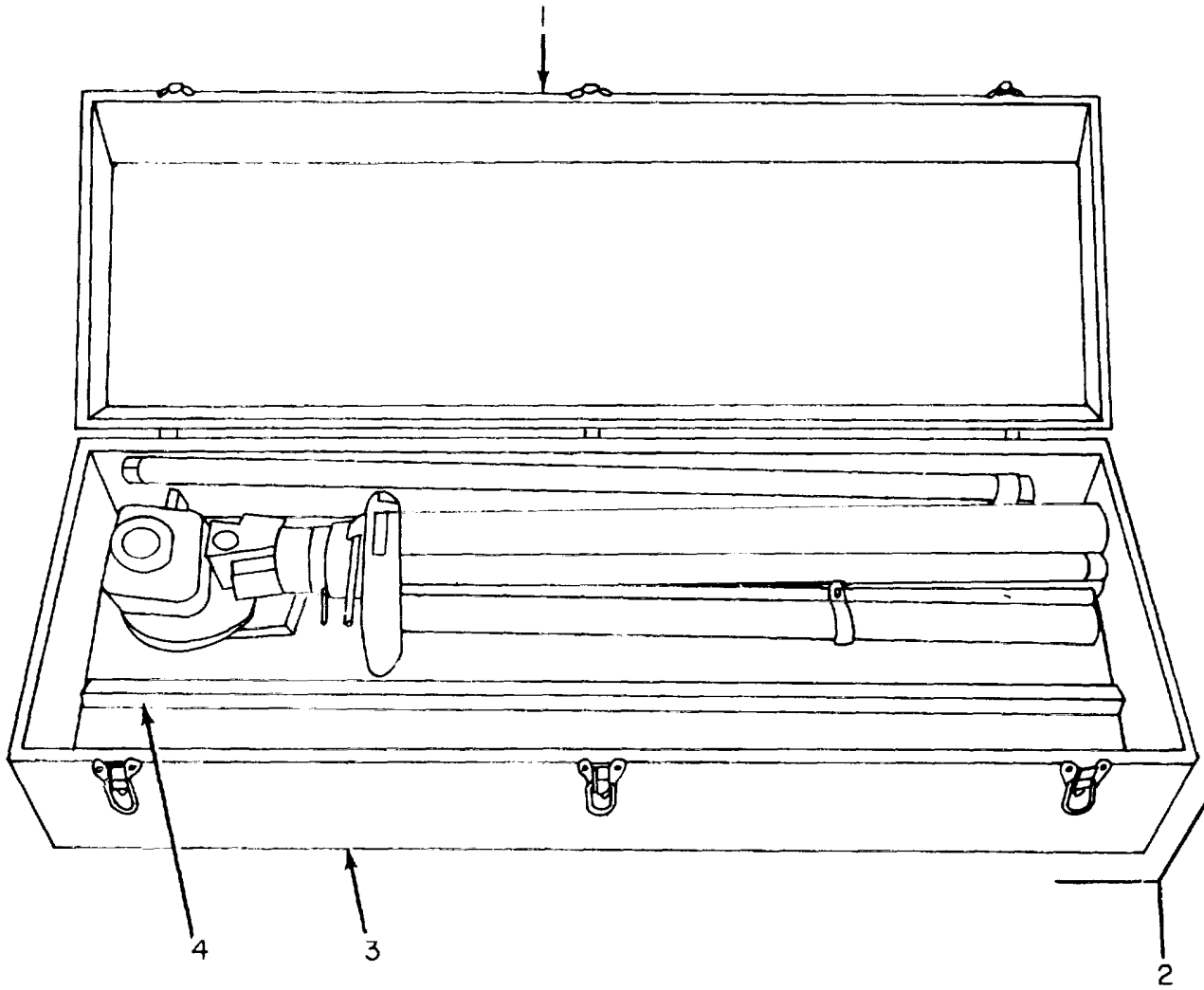
(1) ILLUSTRATION		(2)	(3)	(4)	(5)	(6) DESCRIPTION	(7)	(8)
(a) FIG NO.	(b) ITEM NO.	SMR CODE	NATIONAL STOCK NUMBER	PART NUMBER	FSCM	USABLE ON CODE	U/M	QTY INC IN UNIT
3	1	XDOZZ		588-272	99176	BOX,JUNCTION.....	EA	1
3	2	XDFFF		588-233	99176	CIRCUIT CARD ASSY	EA	1
3	3	XDFZZ		2233	71279	HOLDER, BATTERY	EA	1
3	4	XDFZZ		MS35221-5	96906	SCREW,RH STL C D PL	EA	3
3	5	XDFZZ		588-232-1	99176	BOARD,CIRCUIT.....	EA	1
3	6	XDFZZ		109222	73734	SPACER.....	EA	3
3	7	PAOZZ	6720-00-401-1541	588-219	99176	CORD,SHUTTER	EA	1
3	8	PAOZZ	6760-00-441-9413	588-220	99176	CORD,FLASH	EA	2
3	9	XDFZZ		SMB532013	80063	GROMMET	AJL EA	1
3	10	XDOZZ		MS35221-3	96906	SCREW,BIND HD, SST	EA	1
3	11	XDFZZ		588-268	99176	ARM,SUPPORT	EA	1
3	12	XDOZZ		588-229	99176	THUMBSCREW	AJL EA	2
3	13	XDFZZ		309	27321	CLIP ASSY,RELEASE.....	EA	2
3	14	PAOFF	6760-00-441-9411	588-348	99176	MASK ASSY,FLASHUNIT	EA	1
3	15	XDFZZ		588-345	99176	MASK,FLASH UNIT.....	EA	1
3	16	XDFZZ		6TYPEA	70892	COUPLING.....	EA	2
3	17	XDFZZ		6X5-1-2L	70892	CPAIN,BEAD,BRASS.CP	EA	1
3	18	XDFZZ		MS35221-27	96906	SCREW,RIL HD	EA	4
3	19	PAFZZ	5910-00-225-7329	UK10-104	71590	CAPACITOR,FXC,CER.....	EA	1
3	20	PAFZZ	5905-00-816-8554	RC07GF103K	81343	RESISTOR,FXD,CMPSN	EA	1
3	21	XDFZZ		RC07GF102K	81349	RESISTOR.FXD,CMPSN	EA	1
3	22	XDFZZ		GEC106C2	03508	SEMICONDUCTOR.DIODE	EA	2



EL4BH004

Figure 4. Camera Sets, Still Picture KS-19A4 and KS-19B, Tripod Assembly.

(1) ILLUSTRATION		(2)	(3)	(4)	(5)	(6) DESCRIPTION	(7)	(8)
(a) FIG NO.	(b) ITEM NO.	SMR CODE	NATIONAL STOCK NUMBER	PART NUMBER	FSCM	USABLE ON CODE	U/M	QTY INC IN UNIT
4	1	XDFZZ		P1750	28520	PLUG,TUBE PLASTIC	EA	1
4	2	XDFZZ		588-106	99176	TUBE,ALUMINIUM INNER.....	EA	1
4	3	XDFZZ		588-352	99176	SPOOL	EA	2
4	4	PAFZZ	5360-00-157-8040	H12K36	99516	SPRING,SPIRAL TRSN	EA	2
4	5	PAFZZ	5310-00-401-5142	588-358	99176	WASHER,NON-METALLIC	EA	1
4	6	XDFFF		588-350	99516	COUNTERBALANCE ASSY.....	EA	1
4	7	XDFZZ		8064-25-00	02768	RING,RETAINING	EA	4
4	8	XDFZZ		588-351	99176	PIN	EA	2
4	9	XDFZZ		588-354	99176	YOKE AND ROD ASSY.....	EA	1
4	10	XDFZZ		588-356	99176	ANCHOR ASSY,SPRING	EA	1
4	11	PAFZZ	5310-00-481-6526	8-32SST	83355	NUT,HEXAGON	EA	2
4	12	XDFZZ		588-111	99176	LINER,CLAMP.....	EA	1
4	13	XDFZZ		588-103	99176	CLAMP,TELESCOPE.....	EA	1
4	14	PAOFF	5355-00-401-1546	588-193	99176	KNOB ASSEMBLY	EA	1
4	15	XDFZZ		588-071	99176	SCREW,LUG	EA	1
4	16	PAOZZ	5355-00-135-4386	230	80813	KNOB ASSEMBLY	EA	1
4	17	XDFZZ		588-213	99176	TAG, WARNING	EA	1
4	18	PAFZZ		MS35221-83	80063	SCREW,FIL HD.....	EA	1
4	19	XDFZZ		588-105	99176	TUB ALUMINUM OUTER.....	EA	1
4	20	XDFZZ		588-112	99176	LINER,HINGE.....	EA	1
4	21	XDFZZ		588-387	99176	NAMEPLATE	EA	1
4	22	PAFZZ	5310-00-167-0803	AN960C516	88044	WASHER.....	EA	2
4	23	PAOFF	5355-00-401-1545	588-192	99176	KNOB ASSEMBLY	EA	1
4	24	XDFZZ		588-073	55176	SCREW,LUG	EA	1
4	25	PAOZZ	5355-00-135-4386	230	80813	KNOB	EA	1
4	26	XDFZZ		588-117	99176	HINGE,LEGS.....	EA	1
4	27	XDFZZ		588-114	99176	STUD,HINGE	EA	3
4	28	XDFFF		588-118	99176	LEG ASSEMBLY	EA	3
4	29	XDFZZ		588-110	99176	CLAMP,LEG	EA	3
4	30	XDFZZ		588-113	99176	BUMPER,RUBBER	EA	3
4	31	XDFZZ		588-107	99176	LINK,LEG	EA	3
4	32	XDFZZ		MS35222-66	80063	SCREW.FIL HD	EA	3
4	33	XDFZZ		10-32NF-SCP	77122	NUT,ACORN	EA	3
4	34	XDFZZ		MS35222-67	96906	SCREW,FIL HD.....	EA	3
4	35	XDFZZ		588-101	99176	PLUG,HINGE	EA	1
4	36	XDFZZ		6-32X5-16LTYPE-F	99176	SCREW,SELF TAPPING	EA	3



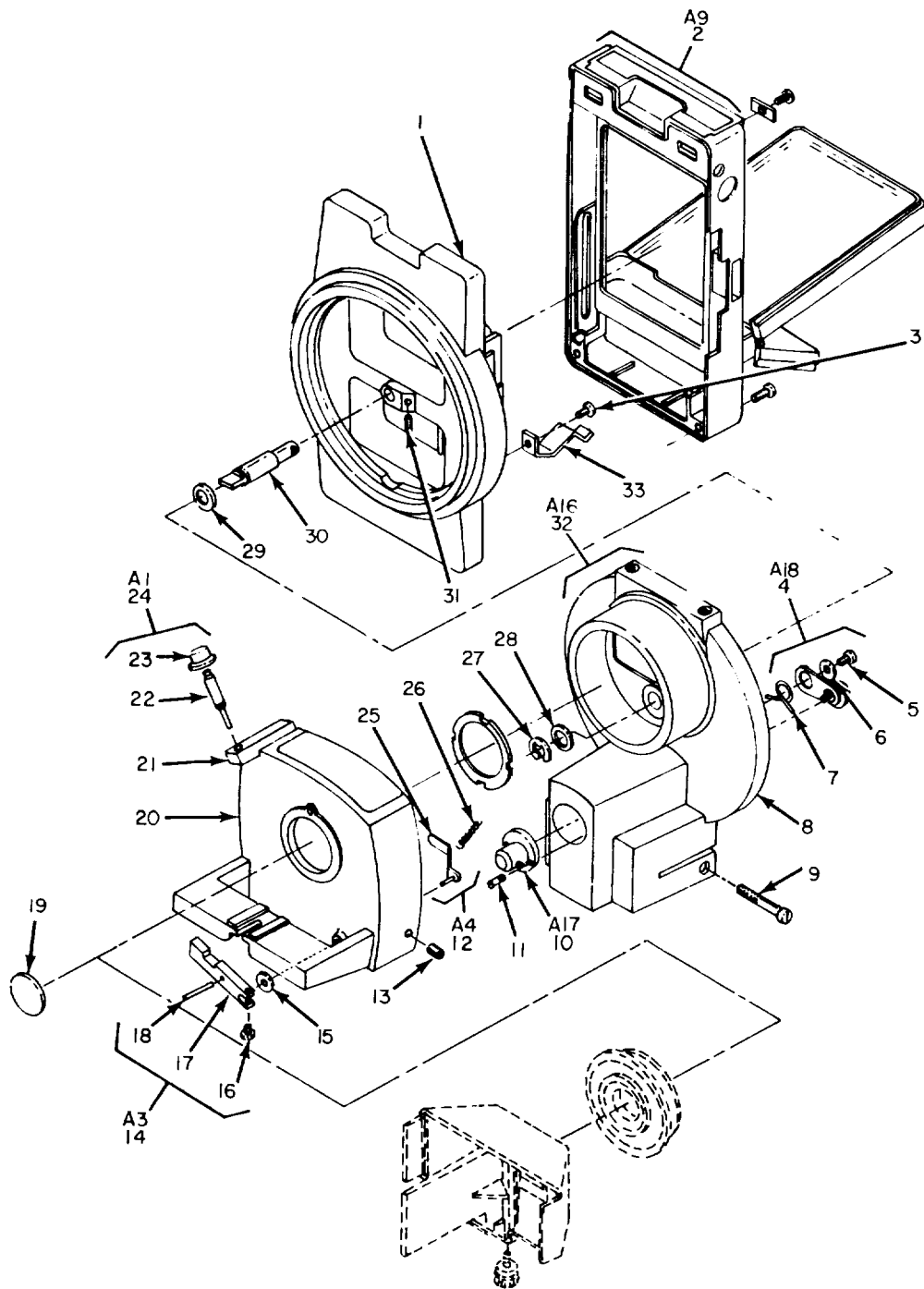
EL4BH005

Figure 5. Camera Sets, Still Picture KS-19A4 and KS-19B, Carrying Case and Other Parts.

SECTION II

TM11-6720-248-34P

(1) ILLUSTRATION		(2)	(3)	(4)	(5)	(6) DESCRIPTION	(7)	(8)
(a) FIG NO.	(b) ITEM NO.	SMR CODE	NATIONAL STOCK NUMBER	PART NUMBER	FSCM	USABLE ON CODE	U/M	QTY INC IN UNIT
5	1	XDOZZ		588-208-1	95176	LID,CASE	EA	1
5	2	PAOOH	6760-00-498-6485	588-207	99176	CASE,CARRYING	EA	1
5	3	XDOZZ		588-208-2	99176	BASE,CARRYING CASE	EA	1
5	4	XDOZZ		588-210	99176	TRAY	EA	1
5	5	XDOZZ		001-142	99176	CASE,CHARACTER SET.....	EA	2
5	6	XDOZZ		001-143	99176	LETTERS-NUT,SIGN	EA	1
5	7	PAOOH	6760-00-981-8692	001-141	99176	CHARACTER TITLE.....	EA	1



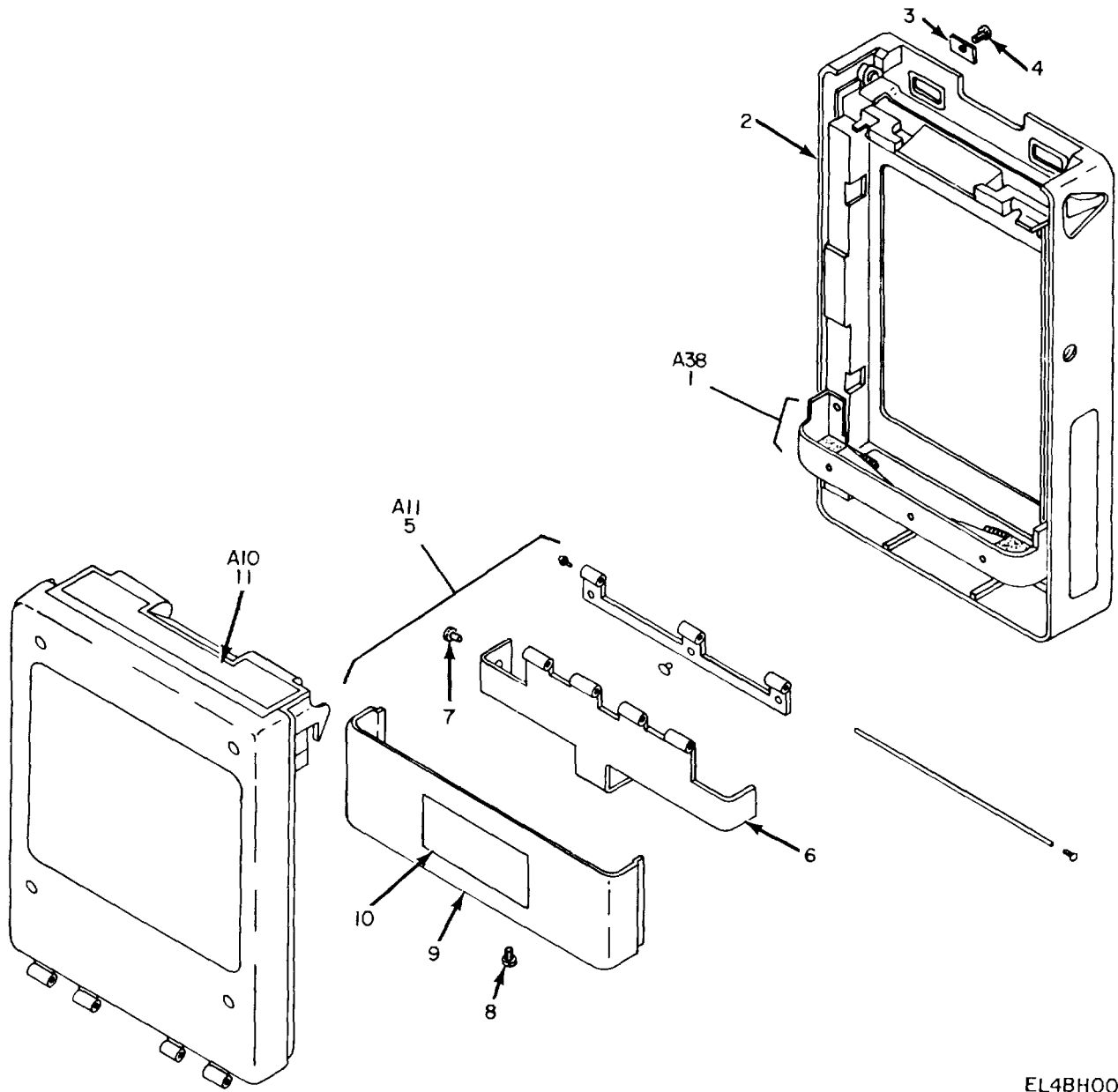
ITEMS LISTED BUT NOT SHOWN.

REF. DES.	ITEM NO.
A2	34
A8	35
	36
	37
	38

Figure 6. Camera Assembly.

EL4BH006

(1) ILLUSTRATION		(2)	(3)	(4)	(5)	(6)	(7)	(8)
(a) FIG NO.	(b) ITEM NO.	SMR CODE	NATIONAL STOCK NUMBER	PART NUMBER	FSCM	DESCRIPTION USABLE ON CODE	U/M	QTY INC IN UNIT
						GROUP 01 CAMERA ASSEMBLY		
6	1	XDFZZ		588-250	99176	HOUSING.ADAPTER.....	EA	1
6	2	XDFFF		588-289	99176	BACK ASSY,POLAROID.....	EA	1
6	3	XDFZZ		MS35222-12	96906	SCREW,MACHINE.....	EA	1
6	4	XDFFF		588-227	99176	LEVER ASSEMBLY.....	EA	1
6	5	XDFZZ		MS35221-45	80063	SCREW,MACHINE.....	EA	1
6	6	XDFZZ		588-257	99176	WASHER,STEP.....	EA	1
6	7	XDFZZ		588-231	99176	SPRING,DETENT.....	EA	1
6	8	XDFZZ		588-251	99176	CASTING,MN SPRT.....	EA	2
6	9	XDFZZ		5-16D1AX2L	99176	SCREW,SOC HD CAP.....	EA	1
6	10	XDFZZ		588-081	99176	LATCH ASSEMBLY.....	EA	1
6	11	XDFZZ		MS35221-15	80063	SCREW,MACHINE.....	EA	2
6	12	XDFFF		588-224	99176	LEVER-SHAFT ASSY.....	EA	1
6	13	XDFZZ		10-24X5-16SCP	99176	SETSCREW,SLTD FL PT.....	EA	2
6	14	XDFFF		588-223	99176	LATCH ASSY,SAUTTER.....	EA	1
6	15	XDFZZ		1443	73734	WASHER,BRASS.....	EA	1
6	16	XDFZZ		MS35221-5	96906	SCREW,BIND HC,SST.....	EA	1
6	17	XDFZZ		SMB532012	80063	LATCH,SHUTTER.....	EA	1
6	18	XDFZZ		1-8D1AX7-8L	99176	PIN,ROLL.....	EA	1
6	19	PADZZ	6760-00-441-9410	588-222	99176	CAP,LENS.....	EA	1
6	20	XDFZZ		5103-15	79136	RING.RETAINING.....	EA	1
6	21	XDFZZ		588-252	99176	CELL,ADJUSTABLE.....	EA	1
6	22	XDFZZ		588-236	99176	SHAFT,RELEASE.....	EA	1
6	23	XDFZZ		651-530	99176	BUTTON.ACTUATE.....	EA	2
6	24	XDFFF		588-225	99176	CELL ASSY,ADJ.....	EA	1
6	25	XDFZZ		100-600	99176	PIN,DOWEL.....	EA	1
6	26	XDFZZ		571-248	99176	SPRING.....	EA	1
6	27	PAFZZ	5365-00-205-4290	5131-37	79136	RING,RETAINING.....	EA	1
6	28	XDFZZ		31-550	73734	WASHER.....	EA	2
6	29	XDFZZ		371TC	05616	WASHER,NYLON.....	EA	2
6	30	XDFZZ		588-259	99176	PIN,MAIN PIVOT.....	EA	1
6	31	XDFZZ		10-24X3-BL	99176	SETSCREW,HEXAGON.....	EA	1
6	32	XDFFF		588-226	99176	CASTING ASSY,MNSPRT.....	EA	1
6	33	XDFZZ		588-234	99176	LATCH,SPRING.....	EA	1
6	34	XDFZZ		588-235	99176	KNOB-SHAFT ASSY.....	EA	1
6	35	XDFZZ		588-230	99176	HOUSING ASSY,ADPT.....	EA	1
6	36	XDFZZ		001-090	99176	MIRROR,LARGE.....	EA	2
6	37	XDFZZ		001-0093	99176	MIRROR,SMALL.....	EA	2
6	38	XDFZZ		001-092	99176	PLATE.....	EA	1



EL4BH007

Figure 7. Camera Back Assembly.

SECTION II

TM11-6720-248-34P

(1) ILLUSTRATION		(2)	(3)	(4)	(5)	(6)	(7)	(8)
(a) FIG NO.	(b) ITEM NO.	SMR CODE	NATIONAL STOCK NUMBER	PART NUMBER	FSCM	DESCRIPTION USABLE ON CODE	U/M	QTY INC IN UNIT
						GROUP 0101 CAMERA BACK ASSEMBLY		
7	1	XDOZZ		155503	47904	REAR DOOR SPOR ASSY	EA	1
7	2	XDFZZ		588-99176	99176	DIVIDER,FRAME.....	EA	1
7	3	XDFZZ		588-270	99176	WASHER,ADAPTER.....	EA	2
7	4	XDFZZ		MS35221-26	96906	SCREW,MACHINE.....	EA	4
7	5	XDFFF		155318	47904	COVER ASSY,REAR	EA	1
7	6	XDFZZ		155312	47904	SPIDER,COVER REAR.....	EA	1
7	7	XDFZZ		157830	47904	RIVET	EA	1
7	8	XDFZZ		157897	47904	RIVET	EA	1
7	9	XDFZZ		146835	47904	COVER,REAR.....	EA	1
7	10	XDFZZ		588-096	99176	LABEL,FILTER	EA	1
7	11	PAOFF	6720-00-908-9080	146860	47904	DOOR ASSY,REAR	EA	1

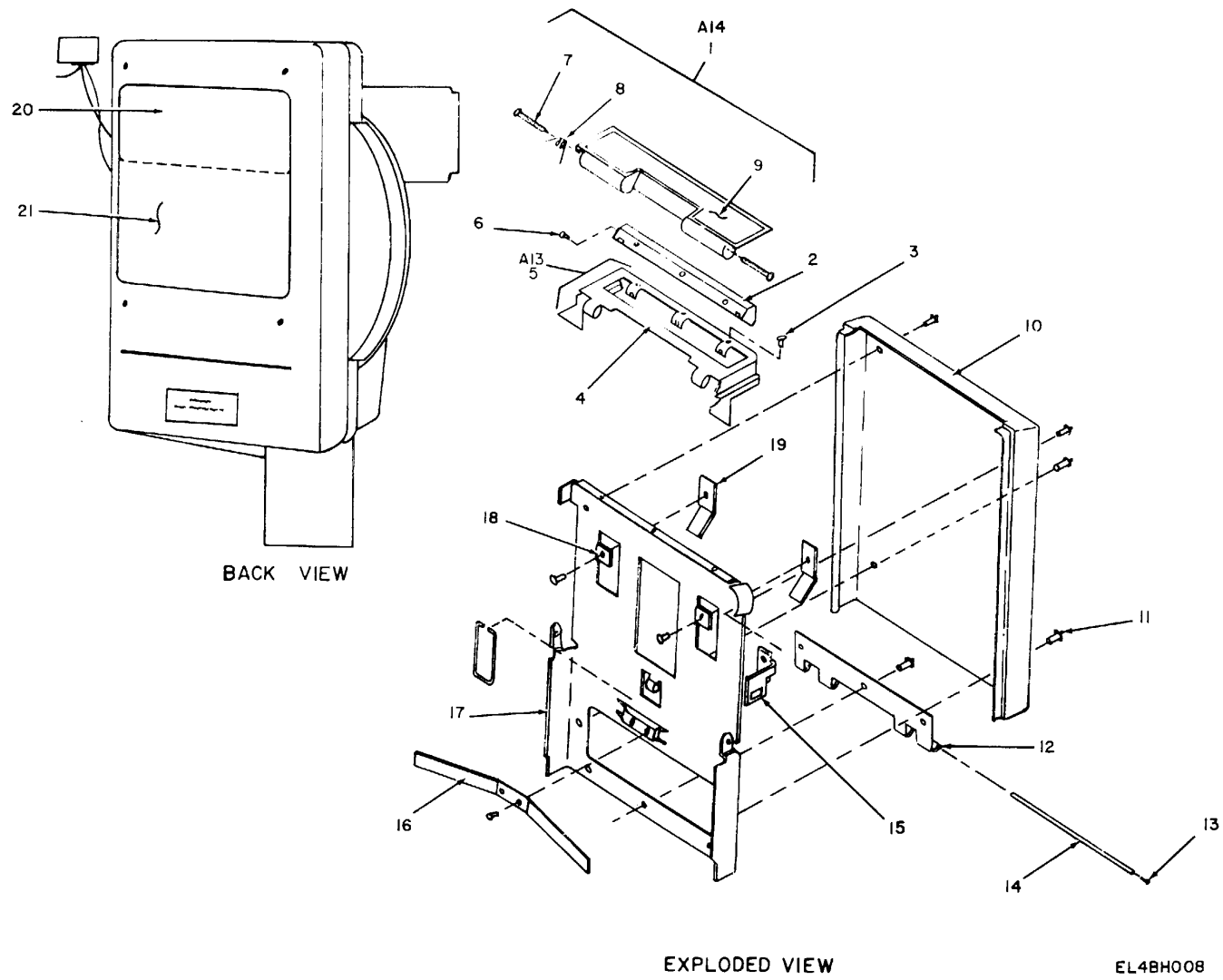
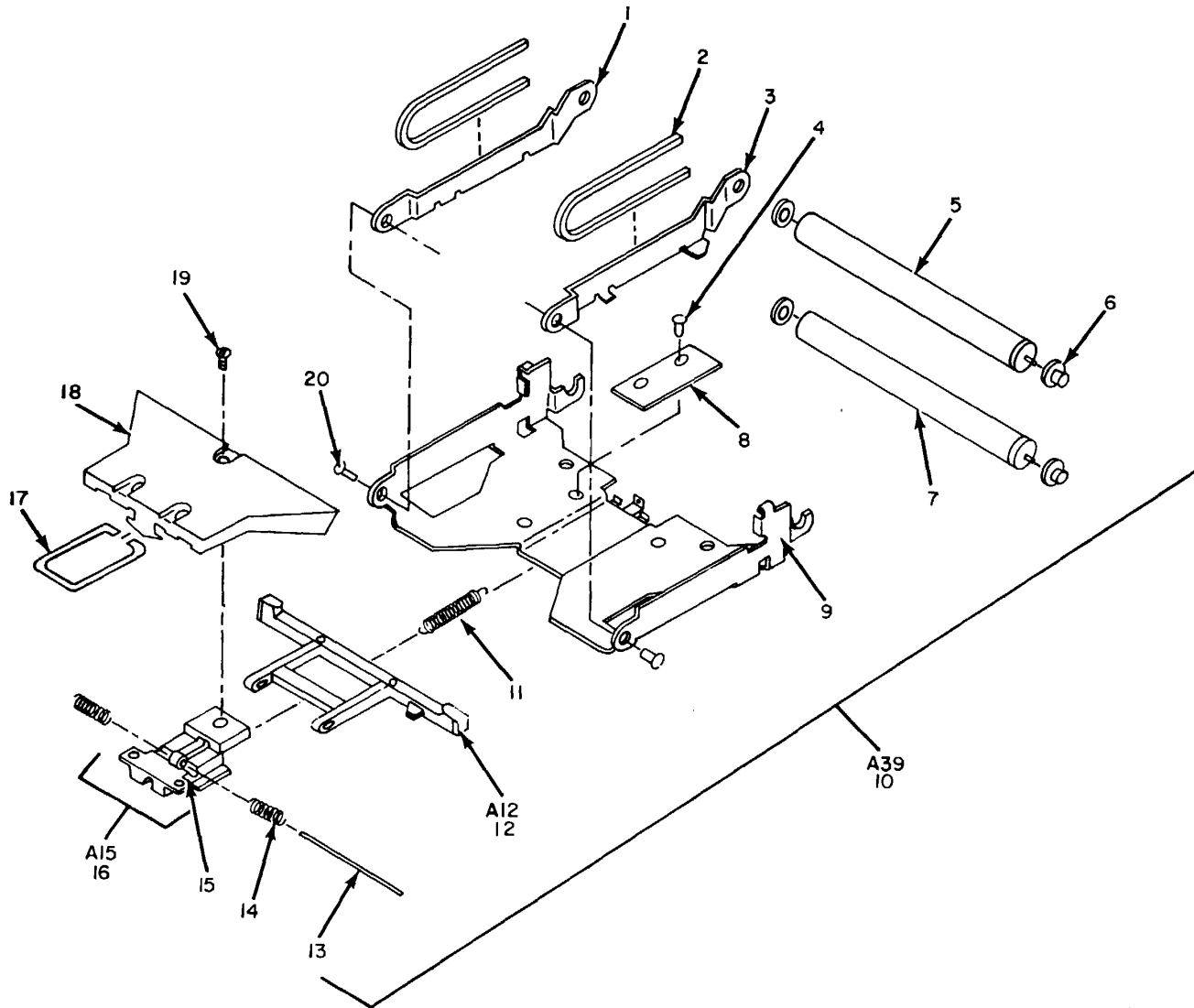


Figure 8. Door Assembly

SECTION II

TM11-6720-248-34P

(1) ILLUSTRATION		(2)	(3)	(4)	(5)	(6) DESCRIPTION	(7)	(8)
(a) FIG NO.	(b) ITEM NO.	SMR CODE	NATIONAL STOCK NUMBER	PART NUMBER	FSCM	USABLE ON CODE	U/M	QTY INC IN UNIT
						GROUP 010101 DOOR ASSEMBLY		
8	1	PAOFF	6720-00-914-5894	157932	47904	EXIT DOOR ASSY	EA	1
8	2	XDOZZ		155340	47904	GUIDE BAR,EXIT	EA	1
8	3	XDFZZ		157897	47904	RIVET.....	EA	1
8	4	XDOZZ		146871	47904	COVER FRAME,EXIT	EA	1
8	5	XDOFF		155282	47904	EXIT COVER FR ASSY.....	EA	1
8	6	XDOZZ		160402	47904	RIVET	EA	3
8	7	XDOZZ		157895	47904	STUD,PVT,EXIT DOOR	EA	2
8	8	PAOZZ	5360-00-498-6467	157894	47904	SPRING,PVT,EXIT DR.....	EA	1
8	9	PAOZZ	6720-00-933-4035	146678	47904	PLATE,EXIT COVER.....	EA	1
8	10	XDOZZ		146834	47904	DOOR,REAR.....	EA	1
8	11	PAOZZ	5320-00-914-7406	121741	47904	RIVET.....	EA	3
8	12	XDOZZ		146688	47904	HINGE,DOOR	EA	1
8	13	PAOZZ	5315-00-181-6251	151887	47904	PLUG,HINGE	EA	2
8	14	PAOZZ	5315-00-403-1694	149526	47904	PIN,HINGE	EA	1
8	15	XDOZZ		161121	47904	LATCH,ROLL	EA	1
8	16	XDOZZ		157904	47904	SPRING,DOOR	EA	1
8	17	XDOZZ		149766	47904	SPIDER,REAR DOOR.....	EA	1
8	18	XDOZZ		76121	47904	RIVET,SPRING STOP.....	EA	2
8	19	XDOZZ		157992	47904	SPRING,ROLL FRAME	EA	2
8	20	XDFZZ		588-098	99176	NAMEPLATE	EA	1
8	21	XDFZZ		588-346	99176	PLATE,INSTRUCTION.....	EA	1



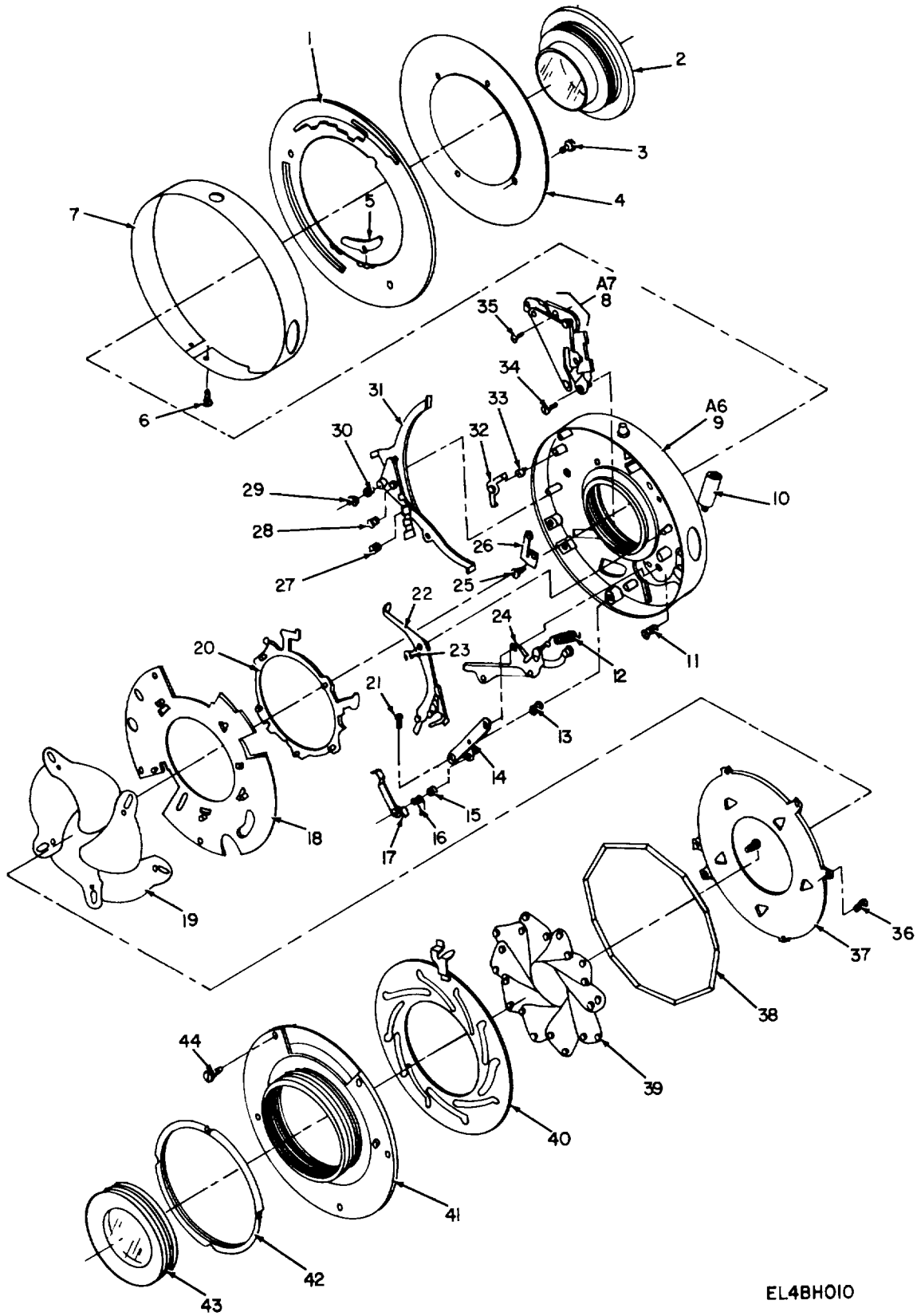
EL4BH009

Figure 9. Door Assembly, Frame Roller Support Assembly.

SECTION II

TM11-6720-248-34P

(1) ILLUSTRATION		(2)	(3)	(4)	(5)	(6) DESCRIPTION	(7)	(8)
(a) FIG NO.	(b) ITEM NO.	SMR CODE	NATIONAL STOCK NUMBER	PART NUMBER	FSCM	USABLE ON CODE	U/M	QTY INC IN UNIT
9	1	XDOZZ		155322	47904	ROLL SUPPORT,FR,L.....	EA	1
9	2	PAOZZ	6720-00-913-0660	155287	47904	SPRING.SPREAD ROLL.....	EA	2
9	3	XDOZZ		155321	47904	ROLL SUPPORT,FR,R.....	EA	1
9	4	PAOZZ	5320-00-914-7406	121741	47904	RIVET.....	EA	4
9	5	PAOZZ	6720-00-911-3501	149613	47904	ROLLER,FRONT.....	EA	1
9	6	PAOZZ	6720-00-933-2520	149517	47904	BUSHING,ROLLER.....	EA	2
9	7	PAOZZ	6720-00-911-3821	149612	47904	ROLLER,REAR.....	EA	1
9	8	XDOZZ		157842	47904	PLATE,SLIDE.....	EA	2
9	9	XDOZZ		149755	47904	FRAME,RLR SPRT.....	EA	1
9	10	XDOOF		146753	47904	FRAME,RLR SPRT ASSY.....	EA	1
9	11	XDOZZ		157841	47904	SPRING,SLIDE BLOCK.....	EA	1
9	12	PADZZ	6720-00-496-9737	163154	47904	EDGE CONT BAR ASSY.....	EA	1
9	13	PAOZZ	6720-00-914-5891	157838	47904	SHAFT,CAMETA BODY.....	EA	1
9	14	XDOZZ		149574	47904	SPRING LOCATING.....	EA	2
9	15	XDOZZ		155329	47904	SLIDE BLOCK.....	EA	1
9	16	PAOOF	6720-00-911-3825	155330	47904	SLIDE BLOCK ASSY.....	EA	1
9	17	PAOZZ	6720-00-914-5892	04157839	47479	LINK,SLIDE BLOCK.....	EA	1
9	18	PAOZZ	6720-00-914-6192	163151	47904	COVER,SLIDE BLOCK.....	EA	1
9	19	XDOZZ		157837	47904	SCREW.....	EA	3
9	20	XDOZZ		157809	47904	PIVOT.SPREAD ROLL.....	EA	2



EL4BH010

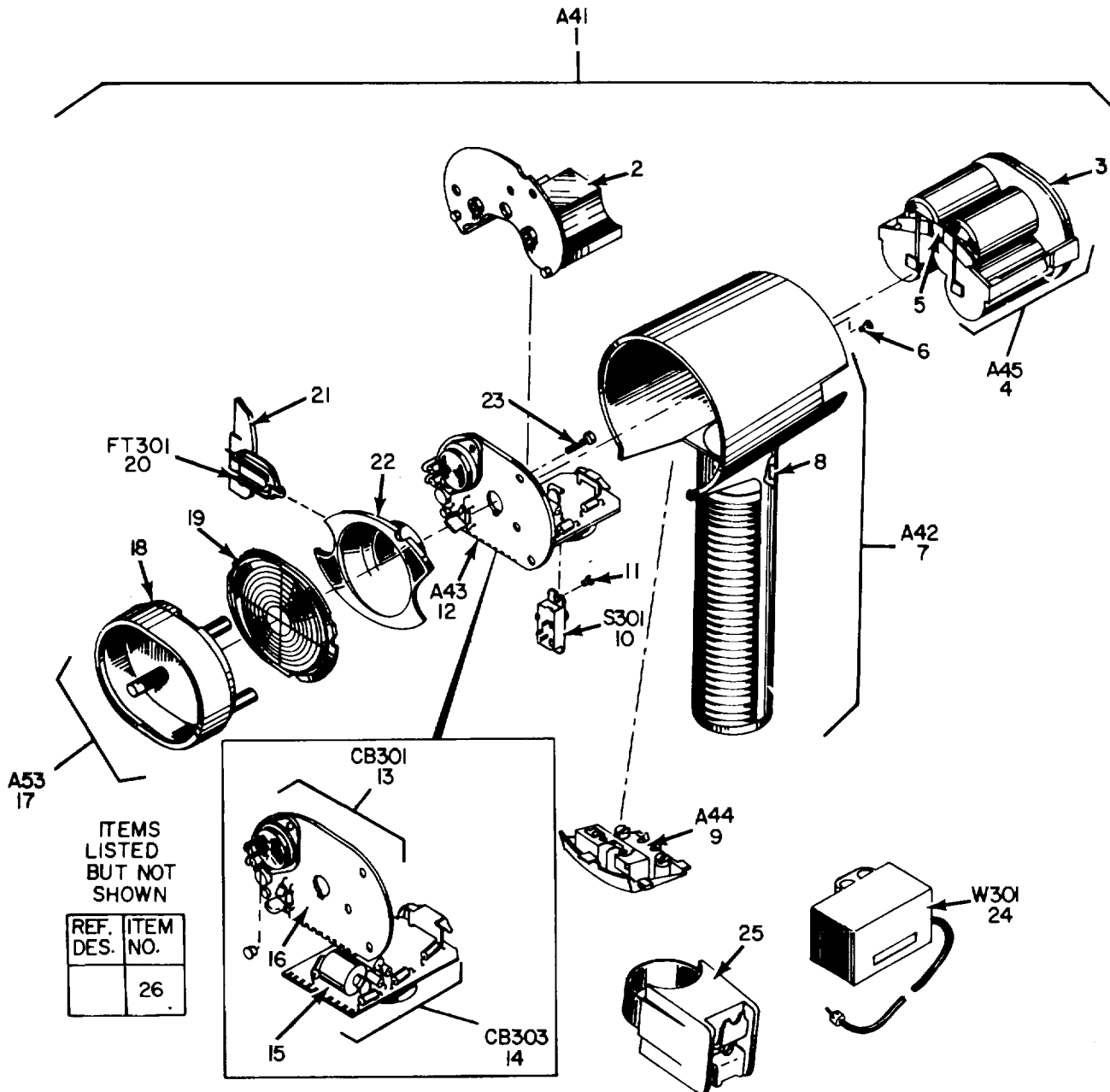
Figure 10. Lens and Shutter Assembly.

(1) ILLUSTRATION		(2)	(3)	(4)	(5)	(6) DESCRIPTION	(7)	(8)
(a) FIG NO.	(b) ITEM NO.	SMR CODE	NATIONAL STOCK NUMBER	PART NUMBER	FSCM	USABLE ON CODE	U/M	QTY INC IN UNIT
						GROUP 02 LENS AND SHUTTER ASSEMBLY		
10	1	XDHZZ		588-269-42	99176	RING,ADJ SHTR SPEED	EA	1
10	2	XDHZZ		588-269-39	99176	LENS,GENL PHOTO	EA	1
10	3	XDHZZ		588-269-41	99176	SCREW,MACHINE	EA	4
10	4	XDHZZ		588-269-40	99176	PLATE,IDENT	EA	1
10	5	XDHZZ		588-269-43	99176	DETENT	EA	1
10	6	XDHZZ		588-269-38	99176	SCREW,MACHINE	EA	2
10	7	XDHZZ		588-269-31	99176	PLATE,INDICATOR	EA	1
10	8	XDHZZ		588-269-34	99176	TIMER MECH ASSEMBLY	EA	1
10	9	XDHZZ		588-269-44	99176	HOUSING,LENS SITR	EA	1
10	10	XDHZZ		588-269-23	99176	SOCKET,BUTTON RLSE	EA	1
10	11	XDHZZ		588-269-24	99176	SCREW,MACHINE	EA	1
10	12	PAHZZ	5360-00-248-5993	588-269-22	99176	SPRING,RETURN,SHTR	EA	1
10	13	PAHZZ	5360-00-246-5994	588-269-20	99176	SPRING,SHUTTER RLSE	EA	1
10	14	XDHZZ		588-269-18	99176	PLATE,PIVOT RELEASE	EA	1
10	15	PAHZZ	5360-00-248-6009	588-269-15	99176	SPRING,LOCKING LVR	EA	1
10	16	PAHZZ	5360-00-248-5995	588-269-14	99176	SPRING,RELEASE LVR	EA	1
10	17	XDHZZ		586-269-13	99176	LEVER,LOCKING	EA	1
10	18	XDHZZ		588-269-11	99176	PLATE,RING SHUTTER	EA	1
10	19	PAHZZ	6760-00-409-6612	588-269-10	99176	LEAF,SHTR DIAPH	EA	6
10	20	XDHZZ		588-269-12	99176	LEVER,SPEED CAM	EA	1
10	21	XDHZZ		588-269-19	99176	SCREW,MACHINE	EA	2
10	22	XDHZZ		588-269-16	99176	LEVER,RELEASE	EA	1
10	23	XDHZZ		588-269-17	99176	RING,RETAINING	EA	1
10	24	XDHZZ		588-269-21	99176	LEVER,RELEASE SHTR	EA	1
10	25	XDHZZ		588-269-26	99176	SCREW,MACHINE	EA	1
10	26	XDHZZ		588-269-25	99176	LEVER,ACTUATOR SHTR	EA	1
10	27	PAHZZ	5360-00-438-8885	588-269-33	99178	SPRING,ACTUATOR LVR	EA	1
10	28	PAHZZ	5360-00-248-6010	588-269-32	99176	SPRING,COCKING LVR	EA	1
10	29	XDHZZ		588-269-30	99176	RING,RETAINING	EA	1
10	30	PAHZZ	5360-00-438-8794	588-269-31	99116	SPRING,COCKING LVR	EA	1
10	31	XDHZZ		588-269-29	99176	LEVER,COCKING	EA	1
10	32	XDHZZ		588-269-27	99176	LEVER,SPD CAM RLSE	EA	1
10	33	PAHZZ	5360-00-248-5992	588-269-28	99176	SPRING,SPEED CAM	EA	1
10	34	XDHZZ		588-269-35	99176	SCREW,MACHINE	EA	1
10	35	XDHZZ		588-269-36	99176	SCREW,MACHINE	EA	1
10	36	XDHZZ		588-269-6	99176	SCREW,MACHINE	EA	2
10	37	XDHZZ		588-269-5	99176	PLATE,RETAINIG	EA	1
10	38	XDHZZ		588-269-7	99176	WASHER,SPRING TNSN	EA	1
10	39	XDHZZ		588-268-8	99176	LEAF,IRIS DIAPH	EA	1

SECTION II

TM11-6720-248-34P

(1) ILLUSTRATION		(2)	(3)	(4)	(5)	(6)	(7)	(8)
(a) FIG NO.	(b) ITEM NO.	SMR CODE	NATIONAL STOCK NUMBER	PART NUMBER	FSCM	DESCRIPTION USABLE ON CODE	U/M	QTY INC IN UNIT
10	40	XDHZZ		588-269-9	99176	RING,ADJUSTING	EA	1
10	41	XDHZZ		588-269-3	99176	HOUSING,IRIS DIAPH	EA	1
10	42	XDHZZ		588-269-2	99176	NUT,PLAIN,ROUND.....	EA	1
10	43	XDHZZ		588-269-1	99176	LENS,CAMERA.....	EA	1
10	44	XDHZZ		588-269-4	99176	SCREW,MACHINE.....	EA	4



EL4BH011

Figure 11. Strobe Assembly, Model 700.

SECTION II

TM11-6720-248-34P

(1) ILLUSTRATION		(2)	(3)	(4)	(5)	(6)	(7)	(8)
(a) FIG NO.	(b) ITEM NO.	SMR CODE	NATIONAL STOCK NUMBER	PART NUMBER	FSCM	DESCRIPTION USABLE ON CODE	U/M	QTY INC IN UNIT
GROUP 03		STROBE	ASSEMBLY					
11	1	XDOHD		700	27321	FLASH UNIT.....	AJL	EA 1
11	2	XDHZZ		16765888-002	27321	CHASSIS.....	AJL	EA 1
11	3	XDHZZ		16766588-004	27321	PLATE,BACKING	AJL	EA 1
11	4	XDOHH		73000023-004	27321	TRAY ASSEMBLY.....		EA 2
11	5	XDHZZ		16765479-001	27321	CLIP,SPRING.....	AJL	EA 1
11	6	XDHZZ		16761246-023	27321	SCREW	AJL	EA 2
11	7	XDHHH		73001039-004	27321	CAPACITOR-HSG ASSY	AJL	EA 1
11	8	XDHZZ		73000022-004	23721	DECAL.....	AJL	EA 1
11	9	XDHZZ		16765383-002	23721	RECEPTACLE ASSY	AJL	EA 1
11	10	XDHZZ		16755813-002	27321	SWITCH	AJL	EA 1
11	11	XDHZZ		16761246-003	27321	SCREW	AJL	EA 1
11	12	XDHHH		16766479-004	27321	CHASSIS ASSEMBLY.....	AJL	EA 1
11	13	XDHHH		16766354-004	27321	CIRCUIT CARD ASSY 1	AJL	EA 1
11	14	XDHHH		16765848-002	27321	CIRCUIT CARD ASSY 3	AJL	EA 1
11	15	XDHZZ		73000115-001	23721	BOARD,CIRCUIT	AJL	EA 1
11	16	XDHZZ		73000116-001	27321	BOARD,CIRCUIT	AJL	EA 1
11	17	XDHHH		16766480-004	27321	HOUSING,LENS ASSY	AJL	'EA 1
11	18	XDHZZ		16766498-001	27321	REFLECTOR HOUSING	AJL	EA 1
11	19	XDHZZ		73000020-002	27321	LENS	AJL	EA 1
11	20	XDHZZ		16764213-003	27321	FLASHTUBE ASSY	AJL	EA 1
11	21	XDHZZ		16738785-002	27321	INSULATOR	AJL	EA 1
11	22	XDHZZ		16738069-002	27321	REFLECTOR.....	AJL	EA 1
11	23	XDHZZ		73000042-026	27321	SCREW	AJL	EA 3
11	24	XDHHH		16766483-002	27321	CORD ASSY,AC PCWER	AJL	EA 1
11	25	XDHZZ		308	27321	CLAMP,RELEASE.....	AJL	EA 1
11	26	XDOZZ		73000400-001	27321	FILTER	AJL	EA 1

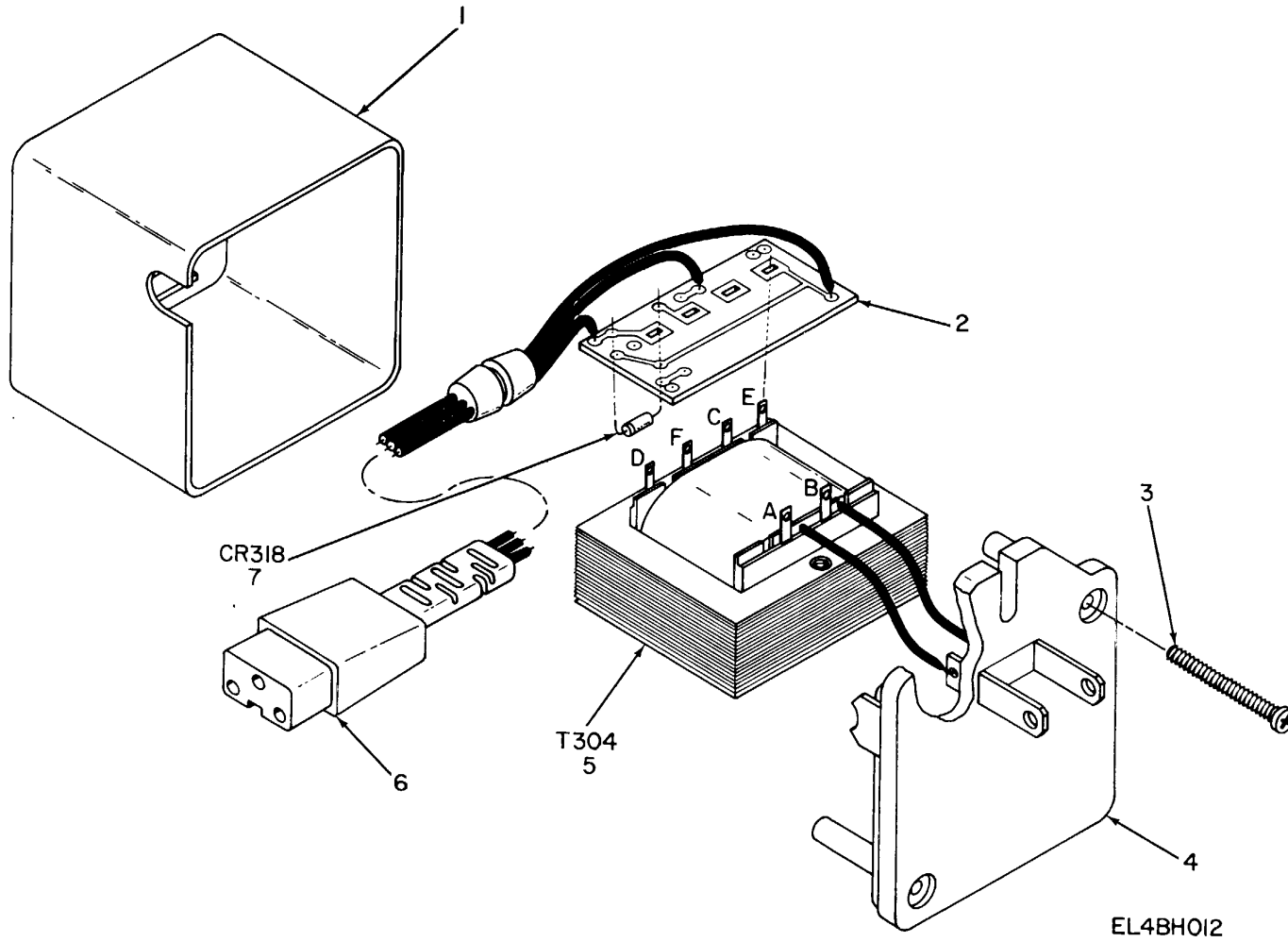


Figure 12. Strobe Assembly, Model 700, AC Power cord Assembly.

SECTION II

TM11-6720-248-34P

(1) ILLUSTRATION		(2)	(3)	(4)	(5)	(6)	(7)	(8)
(a) FIG NO.	(b) ITEM NO.	SMR CODE	NATIONAL STOCK NUMBER	PART NUMBER	FSCM	DESCRIPTION USABLE ON CODE	U/M	QTY INC IN UNIT
12	1	XDHZZ		73000346-002	27321	COVER..... AJL	EA	1
12	2	XDHZZ		73000372-002	27321	BOARD.CIRCUIT AJL	EA	1
12	3	XDHZZ		16756377-023	27321	SCREW AJL	EA	2
12	4	XDHZZ		73000345-001	27321	BASE AJL	EA	1
12	5	XDHZZ		73000541-001	27321	TRANSFORMER..... AJL	EA	1
12	6	XDHZZ		16766484-002	27321	CORD,POWER AJL	EA	1
12	7	XDHZZ		16756808-002	27321	SEMICONUCTOR,DIODE..... AJL	EA	1

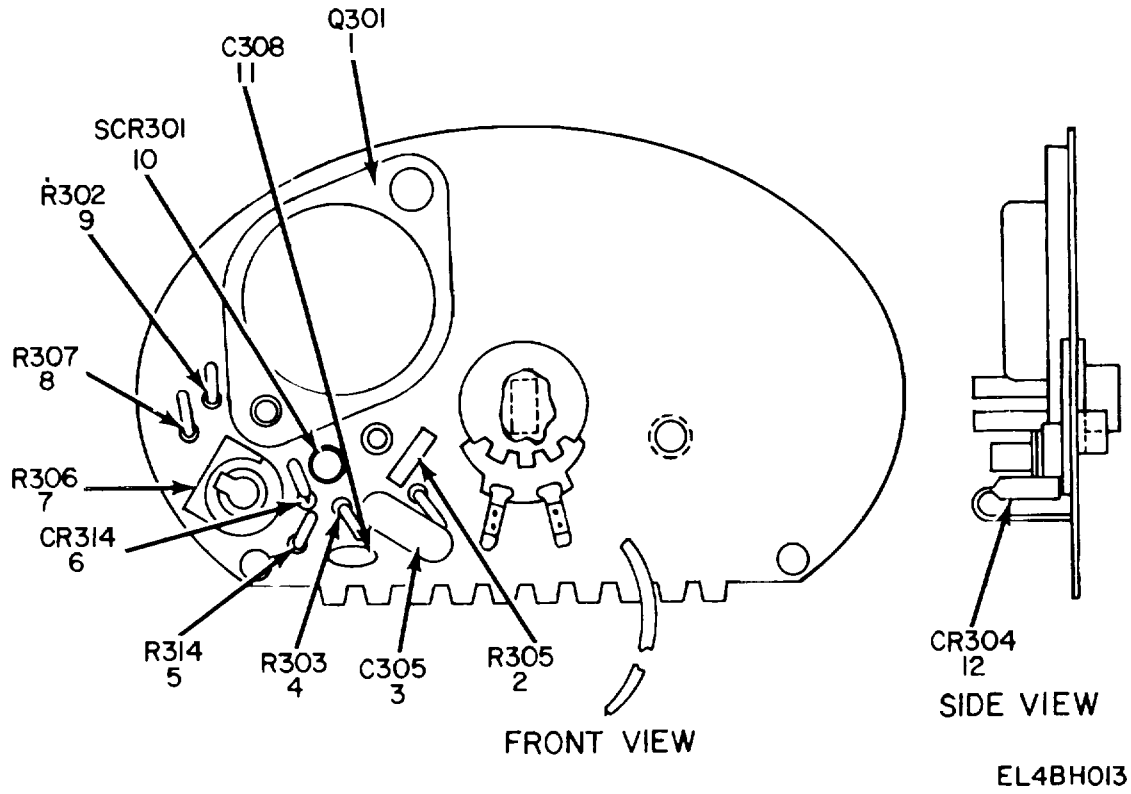
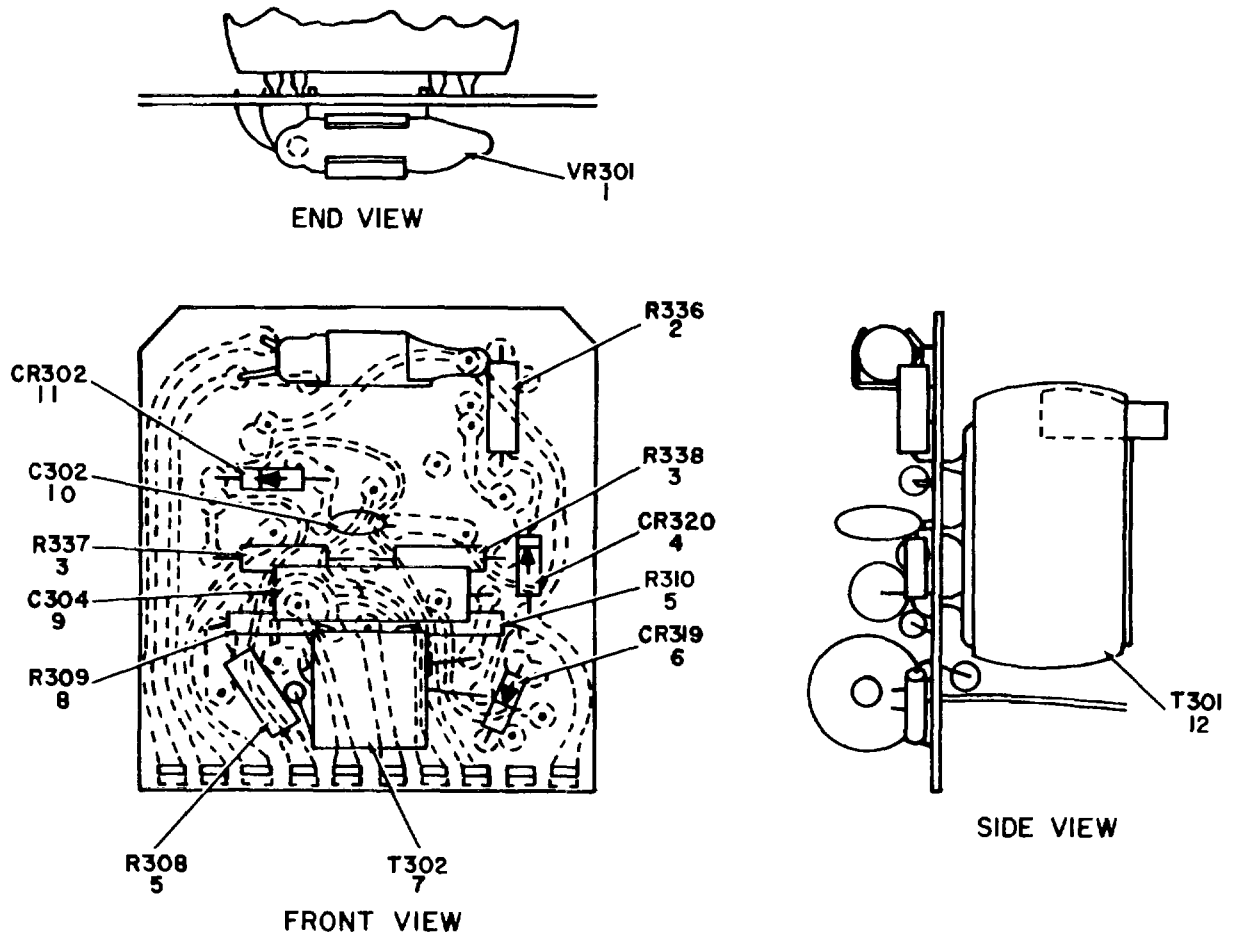


Figure 13. Strobe Assembly, Model 700, Circuit Card Assembly No. 1.

SECTION II

TM11-6720-248-34P

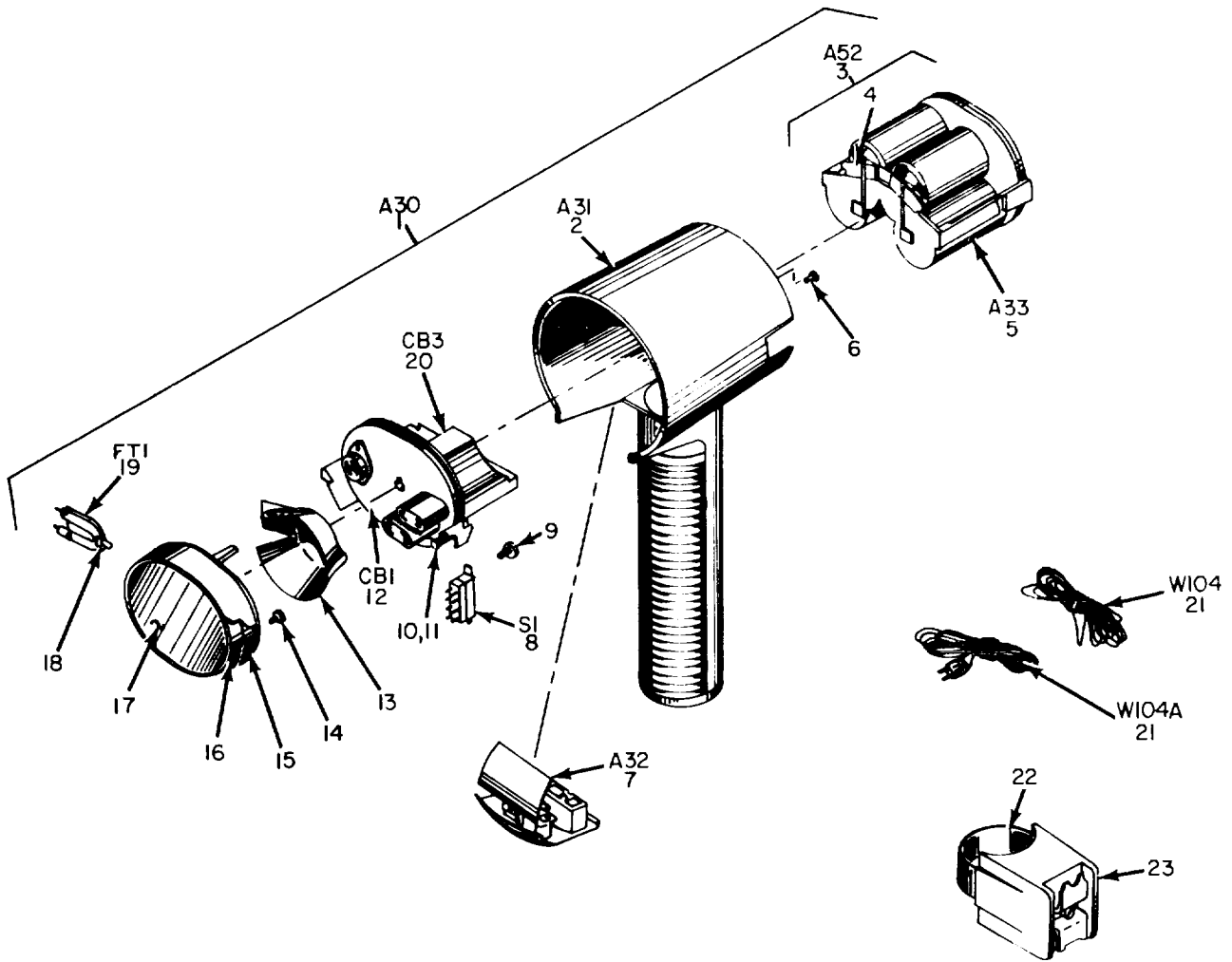
(1) ILLUSTRATION		(2)	(3)	(4)	(5)	(6) DESCRIPTION	(7)	(8)
(a) FIG NO.	(b) ITEM NO.	SMR CODE	NATIONAL STOCK NUMBER	PART NUMBER	FSCM	USABLE ON CODE	U/M	QTY INC IN UNIT
13	1	XDHZZ		16756821-002	27321	TRANSISTOR.....	AJU	EA 1
13	2	PAHZZ	5905-00-106-1356	RCR07G152JS	81349	RESISTOR,FXD,CMPSN	AJU	EA 1
13	3	XDHZZ		16756825-043	27321	CAPACITOR,FXD,MYLAR	AJU	EA 1
13	4	PAHZZ	5905-00-279-1750	RC20GF240J	81349	RESISTOR,FXD,CMPSN	AJU	EA 1
13	5	PAHZZ	5905-00-185-6946	RC20GF474K	81349	RESISTOR,FXD,CMPSN	AJU	EA 1
13	6	XDHZZ		16762845-001	27321	SEMICONDUCTOR,DIODE	AJU	EA 1
13	7	XDHZZ		16762587-112	27321	RESISTOR,VARIABLE.....	AJU	EA 1
13	8	XDHZZ		RC20GF135J	81349	RESISTOR,FXD,CMPSN	AJU	EA 1
13	9	PAHZZ	5905-00-295-3410	RC20GF473K	81349	RESISTOR,FXD,CMPSN	AJU	EA 1
13	10	XDHZZ		16757964-001	27321	SEMICONDUCTOR,RECT	AJU	EA 1
13	11	XDHZZ		16756863-001	27321	CAPACITOR,FXD,MYLAR	AJU	EA 1
13	12	XDHZZ		16756809-002	27321	SEMICONDUCTOR,DIODE	AJU	EA 1



EL4BH014

Figure 14. Strobe Assembly, Model 700, Circuit Card Assembly No. 3.

(1) ILLUSTRATION		(2)	(3)	(4)	(5)	(6) DESCRIPTION	(7)	(8)
(a) FIG NO.	(b) ITEM NO.	SMR CODE	NATIONAL STOCK NUMBER	PART NUMBER	FSCM	USABLE ON CODE	U/M	QTY INC IN UNIT
14	1	XDHZZ	6240-00-139-5329	16756822-001	27321	LAMP,GLOW.....	AJL	EA 1
14	2	XDHZZ		73000683-073	27321	RESISTOR.CARBON.....	AJL	EA 1
14	3	PAHZZ	5905-00-141-1073	RCR20G564JS	81349	RESISTOR,FXD,CMPSN	AJL	EA 2
14	4	XDHZZ		16756808-002	27321	SEMICONDUCTOR,DIODE	AJL	EA 1
14	5	PAHZZ	5905-00-279-1888	RC20GF825J	81349	RESISTOR,FXD,CMPSN	AJL	EA 2
14	6	XDHZZ		16762845-001	27321	SEMICODUCTOR,DIODE.....	AJU	EA 1
14	7	XDHZZ		16763562-001	27321	TRANSFORMER.PULSE	AJL	EA 1
14	8	PAHZZ	5905-00-279-2505	RC20CF126J	81349	RESISTOR,FXD,CMPSN	AJL	EA 1
14	9	XDHZZ		16760006-001	27321	CAPACITOR,FXD,MYLAR	AJL	EA 1
14	10	XDHZZ		16750036-028	27321	CAPACITOR,FXD,CER.....	AJU	EA 1
14	11	XDHZZ		16763482-002	27321	SEMICONDUCTOR,DIODE	AJL	EA 1
14	12	XDHZZ		16757150-001	27321	TRANSFORMER,POWER	AJU	EA 1



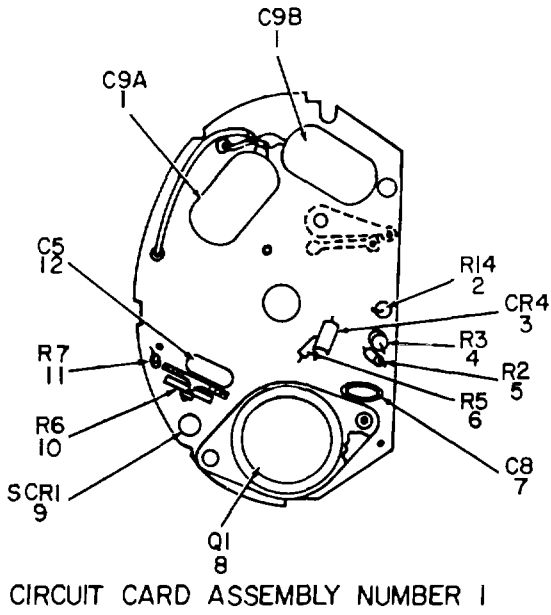
EL4BH015

Figure 15. Strobe Assembly, Model 600.

SECTION II

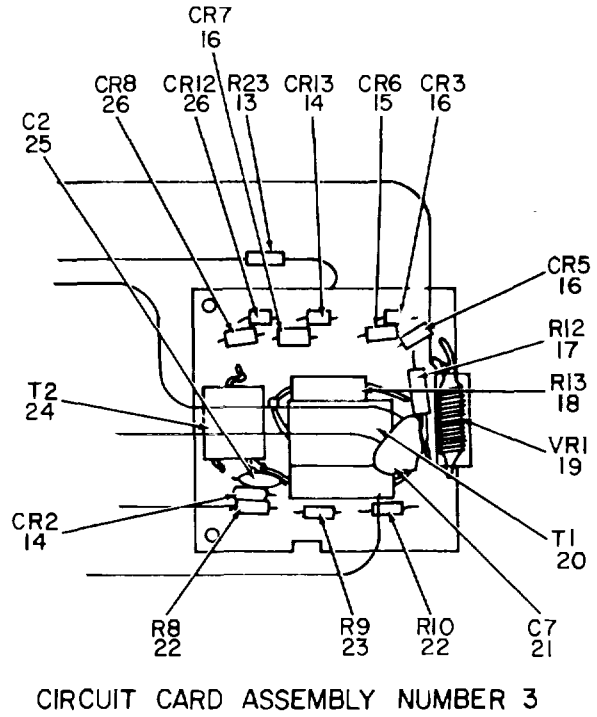
TM11-6720-248-34P

(1) ILLUSTRATION		(2)	(3)	(4)	(5)	(6)	(7)	(8)
(a) FIG NO.	(b) ITEM NO.	SMR CODE	NATIONAL STOCK NUMBER	PART NUMBER	FSCM	DESCRIPTION USABLE ON CODE	U/M	QTY INC IN UNIT
15	1	XDOHD	6760-00-554-4770	600	17479	FLASH UNIT,PHOTO.....2GH	EA	1
15	2	XDHZZ		16763204-001	17479	CAP-HOUSING ASSY.....2GH	EA	1
15	3	XDOFF		73000023-004	27321	TRAY ASSEMBLY.....2GH	EA	1
15	4	XDFZZ		16760048-001	17479	TRAY.....2GH	EA	1
15	5	XDFZZ		16765982-001	17479	TRAY ASSY,BATTERY.....2GH	EA	1
15	6	XDHZZ		16761246-023	27321	SCREW.....2GH	EA	2
15	7	XDHZZ		16761854-001	17479	RECEPTACLE,HSG ASSY.....2GH	EA	1
15	8	XDFZZ		16757115-002	17479	SWITCH,SLIDE.....2GH	EA	1
15	9	XDFZZ		157897	47904	RIVET.....2GH	EA	1
15	10	XDHZZ		16750409-017	17479	NUT,HEXAGON.....2GH	EA	1
15	11	XDHZZ		16121601-001	17479	SCREW.....2GH	EA	1
15	12	XDFHH		16761855-001	17479	CIRCUIT CARD ASSY 1.....2GH	EA	1
15	13	XDHZZ		16759752-001	17479	SHIELD.....2GH	EA	1
15	14	XDHZZ		16750045-009	17479	SCREW,TAPPING.....2GH	EA	1
15	15	XDFZZ		16760023-001	17479	HOUSING,REFLECTOR.....2GH	EA	1
15	16	XDHZZ		16738069-001	17479	REFLECTOR.....2GH	EA	1
15	17	XDHZZ		16761853-001	17479	LENS.....2GH	EA	1
15	18	XDHZZ		16304889-001	17479	CLIP,FLASHTUBE.....2GH	EA	1
15	19	XDFZZ		1674213-002	17479	FLASHTUBE ASSEMBLY.....2GH	EA	1
15	20	XDHHH		16761276-001	17479	CIRCUIT CD ASSY 3.....2GH	EA	1
15	21	XDOZZ		H16100887	17479	CORD,POWER,AC.....2GH	EA	2
15	22	XDFZZ		16759746-001	17479	BRACKET,CHASSIS.....2GH	EA	1
15	23	XDFZZ		3C8	27321	CLAMP,RELEASE.....2GH	EA	1



ITEMS LISTED
BUT NOT SHOWN

REF DES.	ITEM NO.
C3A	27
C4	28
CR14	29



EL4BH016

Figure 16. Strobe Assembly, Model 600, Circuit Cards.

(1) ILLUSTRATION		(2)	(3)	(4)	(5)	(6) DESCRIPTION	(7)	(8)
(a) FIG NO.	(b) ITEM NO.	SMR CODE	NATIONAL STOCK NUMBER	PART NUMBER	FSCM	USABLE ON CODE	U/M	QTY INC IN UNIT
16	1	XDHZZ		16757757-001	17479	CAPACITOR,FXD,MYLAR2GH	EA	2
16	2	PAHZZ	5905-00-185-6946	RC20GF474K	81349	RESISTOR,FXD,CMPSN2GH	EA	1
16	3	XDHZZ		16756809-002	27321	SEMICONDUCTOR,DIODE2GH	EA	1
16	4	PAHZZ	5905-00-279-1750	RC20GF240J	81349	RESISTOR,FXD,CMPSN2GH	EA	1
16	5	PAHZZ	5905-00-141-0717	RCR07G473JS	81349	RESISTOR,FXD,CMPSN2GH	EA	1
16	6	PAHZZ	5905-00-195-5514	RC20GF152K	81349	RESISTOR,FXD,CMPSN2GH	EA	1
16	7	XDHZZ		16756863-001	27321	CAPACITOR,FXD,MYLAR2GH	EA	1
16	8	XDHZZ		16756821-002	27321	TRANSISTOR.....2GH	EA	1
16	9	XDHZZ		16757964-001	27321	SEMICONDUCTOR,DECT.....2GH	EA	1
16	10	XDHZZ		16757138-005	17479	RESISTOR,VARIABLE.....2GH	EA	1
16	11	XDHZZ	RC07GF824K		81349	RESISTOR,FXD,CMPSN2GH	EA	1
16	12	XDHZZ		16756825-043	27321	CAPACITOR,FXD,MYLAR2GH	EA	1
16	13	PAHZZ	5905-00-256-0409	RC20GF221K	81349	RESISTOR,FXD,CMPSN2GH	EA	1
16	14	XDHZZ		16763482-002	27321	SEMICONDUCTOR,DIODE2GH	EA	2
16	15	XDHZZ		16756807-002	17479	SEMICONDUCTOR,DIODE2GH	EA	1
16	16	XDHZZ		16756801-002	27321	SEMICONDUCTOR,DIODE2GH	EA	3
16	17	PAHZZ	5905-00-104-8345	RC20GF560K	81349	RESISTOR,FXD,CMPSN2GH	EA	1
16	18	XDHZZ		RC07GF826J	81349	RESISTOR,FXD,CMPSN2GH	EA	1
16	19	XDHZZ	6240-00-139-5329	16756822-001	27321	LAMP,GLOW.....2GH	EA	1
16	20	XDHZZ		16757150-002	17479	TRANSFORMER,POWER2GH	EA	1
16	21	XDHZZ		16760585-001	27321	CAPACITOR,ELCTLT2GH	EA	1
16	22	PAHZZ	5905-00-827-2251	RC07GF825J	81349	RESISTOR,FXD,CMPSN2GH	EA	2
16	23	PAHZZ	5905-00-822-4861	RC07GF156J	81349	RESISTOR,FXD,CMPSN2GH	EA	1
16	24	XDHZZ		16763562-001	27321	TRANSFORMER,PULSE2GH	EA	1
16	25	XDHZZ		16756863-001	27321	CAPACITOR,FXD,MYLAR2GH	EA	1
16	26	XDHZZ		16762845-001	27321	SEMICONDUCTOR,DIODE2GH	EA	2
16	27	XDHZZ		16763107-001	17479	CAPACITOR,VARIABLE2GH	EA	1
16	28	XDHZZ		16760006-001	27321	CAPACITOR,FXD,MYLAR2GH	EA	1
16	29	XDHZZ		16762845-001	27321	SEMICONDUCTOR,DIODE2GH	EA	1

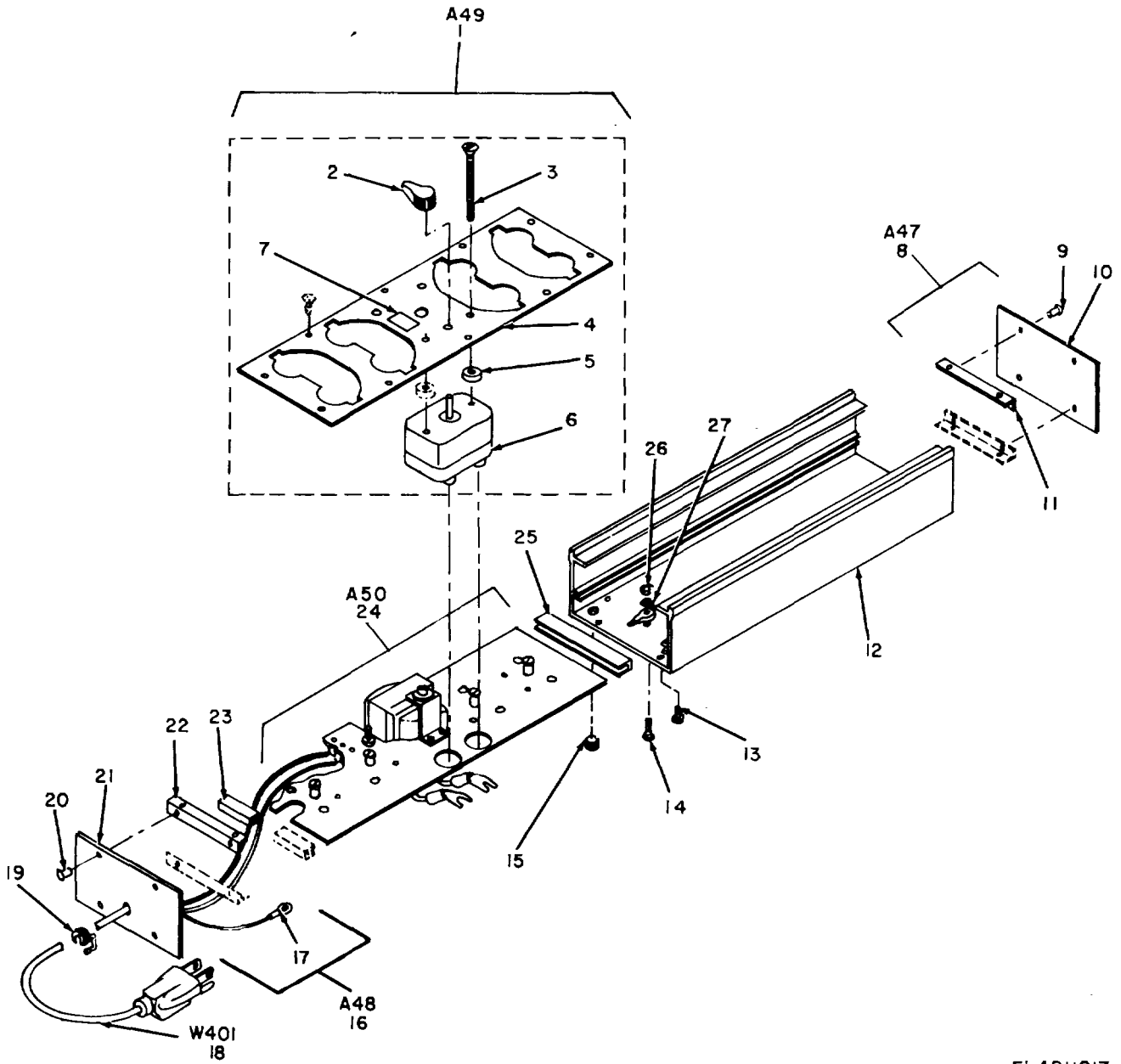


Figure 17. Battery Charger, External.

SECTION II

TM11-6720-248-34P

(1) ILLUSTRATION		(2)	(3)	(4)	(5)	(6) DESCRIPTION	(7)	(8)
(a) FIG NO.	(b) ITEM NO.	SMR CODE	NATIONAL STOCK NUMBER	PART NUMBER	FSCM	USABLE ON CODE	U/M	QTY INC IN UNIT
						GROUP 04 BATTERY CHARGER,EXTERNAL		
17	1	XDFFF		588-035	99176	PANEL-TIMER ASSY AJU	EA	1
17	2	XDOZZ		588-184	99176	KNOB,CONTROL,TIMER..... AJU	EA	1
17	3	XDFZZ		M535221-36	96906	SCREW,MACHINE..... AJU	EA	2
17	4	XDFZZ		588-186	99176	PANEL..... AJU	EA	1
17	5	XDFZZ		588-149	99176	SPACER..... AJU	EA	2
17	6	PAFZZ	6645-00-432-2339	588-181	99176	TIMER AJU	EA	1
17	7	XDOZZ		588-153	99176	LABEL,TIMER AJU	EA	1
17	8	XDFFF		588-243	99176	END PLATE ASSEMBLY AJU	EA	1
17	9	XDFZZ		4-8DIAX3-16L	99176	RIVET,SEMITUBULAR..... AJU	EA	4
17	10	XDFZZ		588-246	99176	PLATE,END..... AJU	EA	1
17	11	XDFZZ		588-299	95176	BRACKET..... AJU	EA	2
17	12	XDFZZ		588-239	99176	BASE AJU	EA	1
17	13	XDOZZ		MS35221-25	96906	SCREW,MACHINE..... AJU	EA	14
17	14	XDFZZ		MS35221-27	80063	SCREW,FIL HD..... AJU	EA	1
17	15	XDFZZ		5-34-PB	75543	BUMPER,RUBBER AJU	EA	4
17	16	XDFFF		588-243-1	99176	END PLATE ASSY AJU	EA	1
17	17	XDOZZ		83001	92219	TERMINAL,CRIMP AJU	EA	1
17	18	XDOZZ		BK-199	70903	CORD,POWER,AC AJU	EA	1
17	19	XDFZZ		SR-SP-1	28520	STRAIN RELIEF AJU	EA	1
17	20	XDFZZ		1-8DIAX3-16L	99176	RIVET,SEMITUBULAR..... AJU	EA	4
17	21	XDFZZ		588-247	99176	PLATE,END..... AJU	EA	1
17	22	XDFZZ		588-299	95176	BRACKET..... AJU	EA	2
17	23	XDFZZ		588-155	99176	PAD,SHORT..... AJU	EA	2
17	24	XDFFF		588-033	99176	TERMINAL BOARD ASSY AJU	EA	1
17	25	XDFZZ		588-154	99176	PAD,LONG AJU	EA	1
17	26	XDOZZ		6-32	99176	NUT,STL CD PL AJU	EA	1
17	27	XDOZZ		MS35333-3	96906	WASHER,INTL LOCK AJU	EA	1

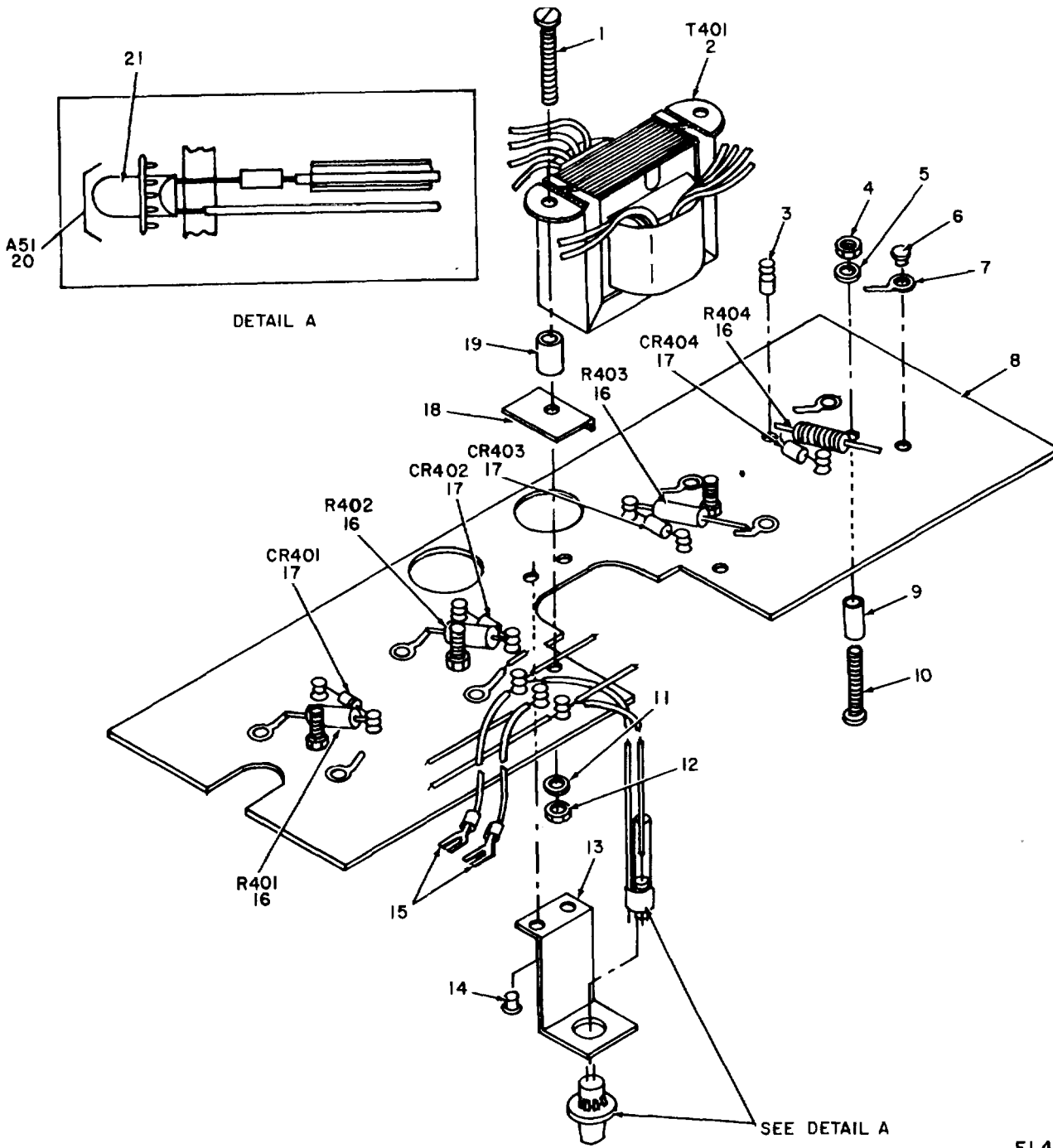


Figure 18. Battery Charger, External, Terminal Board Assembly.

EL4BH018

SECTION II

TM11-6720-248-34P

(1) ILLUSTRATION		(2)	(3)	(4)	(5)	(6)	(7)	(8)
(a) FIG NO.	(b) ITEM NO.	SMR CODE	NATIONAL STOCK NUMBER	PART NUMBER	FSCM	DESCRIPTION USABLE ON CODE	U/M	QTY INC IN UNIT
18	1	XDFZZ		MS35221-49	80063	SCREW,MACHINE.....	AJL	EA 2
18	2	XDFZZ		S-2000	02459	TRANSFORMER.....	AJU	EA 1
18	3	XDFZZ		201-362	99176	TERMINAL,SOLDER.....	AJU	EA 11
18	4	XDFZZ		6-32	99176	NUT,STL CD PL.....	AJU	EA 4
18	5	XDFZZ		MS35333-3	96906	WASHER,INTL LOCK.....	AJU	EA 4
18	6	XDFZZ		1-8DIAX3-16L	99176	RIVET,SEMITUBULAR.....	AJU	EA 8
18	7	XDFZZ		38-125	88421	TERMINAL,INT LOCK.....	AJU	EA 8
18	8	XDFZZ		568-185	99176	TERMINAL BOARD.....	AJU	EA 1
18	9	XDFZZ		100-794	99176	SPACER.....	AJU	EA 4
18	10	XDFZZ		588-137	99176	SCREW.....	AJU	EA 4
18	11	PAFZZ	5310-00-559-0070	MS35333-4	80063	WASHER,INT LOCK.....	AJU	EA 2
18	12	XDFZZ		8-32	99176	NUT,STL CD PL.....	AJU	EA 2
18	13	XDFZZ		588-180	99176	BRACKET,LAMP.....	AJU	EA 1
18	14	XDFZZ		104-943	99176	EYELET,BRASS.....	AJU	EA 2
18	15	XDFZZ		1-2029	99219	TERMINAL,SOLDERLESS.....	AJU	EA 2
18	16	PAFZZ	5905-00-156-0435	RCR42G390JS	81349	RESISTOR,FXD,CMPSN.....	AJU	EA 4
18	17	XDFZZ		TW-10	13327	SEMICONDUCTOR,DIODE.....	AJU	EA 4
18	18	XDFZZ		588-182	99176	PLATE.....	AJU	EA 2
18	19	XDFZZ		100-802	99176	SPACER.....	AJU	EA 2
18	20	XDFZZ		588-032	99176	PILOT LAMP ASSY.....	AJU	EA 1
18	21	XDFZZ		117-323	73064	LAMP,PILOT.....	AJU	EA 1

NATIONAL STOCK NUMBER AND PART NUMBER INDEX

NOTE: LATEST NATIONAL STOCK NUMBER ASSIGNMENTS ARE INCLUDED AT END OF INDEX

STOCK NUMBER	FIG.	ITEM	STOCK NUMBER	FIG.	ITEM
6240-00-139-5329	14	1	5360-00-438-8794	10	30
6240-00-139-5329	16	19	6760-00-441-9410	6	19
5360-00-157-8040	4	4	6160-00-441-9411	3	14
5310-00-167-0803	4	22	6760-00-441-9413	3	8
6720-00-177-5134	1	5	6720-00-491-0550	2	1
5315-00-181-6251	8	13	6720-00-496-9737	s	12
5905-00-185-6946	13	5	5360-00-498-6467	8	8
5905-00-185-6946	16	2	6760-00-498-6485	5	2
5905-00-195-5514	16	6	6760-00-554-4770	1	2
3605-00-205-4290	6	21	6160-00-554-4770	15	1
5010-00-225-7329	3	19	5310-00-559-0070	18	11
5360-00-248-5992	10	33	6760-00-760-6151	1	4
5360-00-248-5993	10	12	5905-00-816-8554	3	20
5360-00-248-5994	10	13	5905-00-827-2251	16	22
5360-00-248-5995	10	16	6720-00-908-9080	7	11
5360-00-248-6009	10	15	6720-00-111-3501	9	5
5360-00-248-6010	10	28	6720-00-911-3821	9	7
5905-00-256-0409	16	13	6720-00-911-3825	9	16
6760-00-258-2061	1	2	6720-00-913-0660	9	2
5905-00-279-1750	13	4	6720-00-914-5891	9	13
5905-00-279-1750	16	4	6720-00-914-5892	9	17
5905-00-279-1888	14	5	6720-00-914-5894	8	1
5905-00-279-2505	14	8	6720-00-914-6192	9	19
5905-00-295-3410	13	9	5320-00-514-7406	8	11
5355-00-401-1545	4	23	5320-00-914-7406	9	4
5355-00-401-1546	4	14	6720-00-933-2520	9	6
6720-00-401-1547	3	7	6720-00-933-4035	8	9
5310-00-401-5142	4	5	5355-00-953-2324	2	9
5315-00-403-7694	8	14	6720-00-081-8690	2	10
6760-00-409-6612	10	19	6760-00-981-8692	5	7
6720-00-432-2335	2	12	6760-00-983-3976	2	8
6645-00-432-2339	17	6			

PART NUMBER	FSCM	FIG. NO.	ITEM NO.	PART NUMBER	FSCM	FIG. NO.	ITEM NO.
ANS60C516	88044	4	22	RC20GF825J	81349	14	5
BK-199	70903	17	18				
GEC106C2	03508	3	22				
H12K36	99176	4	4	S-2000	02459	18	2
H16100887	17479	15	21	SMB532012	80063	6	17
MS35221-15	80063	6	11	SMB532013	80063	3	9
MS35221-25	96906	17	13	SR-SP-1	28520	17	19
MS35221-26	96906	7	4	TW-10	13327	18	17
MS35221-27	80063	17	14	UK10-104	71590	3	19
MS35221-27	96906	3	18	001-0093	99176	6	37
MS35221-3	96906	3	10	001-090	99176	2	11
MS35221-36	96906	17	3	001-090	99116	6	36
MS35221-45	80063	6	5	001-002	99176	6	38
MS35221-49	80063	18	1	001-095	99176	2	10
MS35221-5	96906	3	4	001-141	99176	5	7
MS35221-5	96906	6	16	001-142	99176	5	5
MS35221-83	80063	4	18	001-143	99176	5	6
MS35222-12	96906	6	3	04157839	47479	9	17
MS35222-83	80063	2	7	1-2029	99219	16	15
MS35222-66	80063	4	32	1-dCIAx3-16L	99176	17	20
MS35222-67	96906	4	34	1-8DIAx3-16L	99176	18	6
MS35233-3	96906	17	27	1-8DIAx7-8L	99176	6	16
MS35133-3	96906	11	5	10-24X3-8L	99176	6	31
MS35333-4	80063	18	11	10-24X5-16SCP	99176	6	13
P1750	28520	4	1	10-32NF	99176	2	6
RC07GF102K	81349	3	11	10-32NF-SCP	77122	4	33
RC07GF103K	81349	3	20	1CC-6CC	99176	6	25
				100-794	99116	18	9
				100-802	99176	18	19
				104-943	99176	18	14
RC07GF824K	81349	16	11	109222	73734	3	6
RC07GF8258	81349	16	22	116A	80813	2	9
RC07GF826J	81349	16	18	117-323	73664	18	21
RC20GF126J	81349	14	8	121741	47904	8	11
RC200GF135J	81349	13	8	121741	47904	9	4
RC200GF152K	81349	16	6	1443	73734	6	15
RC200GF221K	81349	16	13	146678	47904	8	9
RC20GF240J	61349	13	4	146688	47904	8	12
RC20GF240J	81349	16	4	146153	41904	9	10
RC20GF473K	81349	13	9	146834	47904	8	10
RC20GF474K	81349	13	5	146835	47904	1	9
RC20GF414K	81349	16	2	146860	47104	7	11
RC20GF560K	81349	16	17	146871	47904	16	4

SECTION IV

NATIONAL STOCK NUMBER AND PART NUMBER INDEX

TM11-6720-248-34P

PART NUMBER	FSCM	FIG. NO.	ITEM NO.	PART NUMBER	FSCM	FIG. NO.	ITEM NO.
149517	47904	9	6	16761854-001	17479	15	7
149726	47904	8	14	16761855-001	17479	15	12
149574	47904	9	14	11762587-112	27321	13	7
149612	47904	9	7	16762645-001	27321	13	6
149613	47904	9	5	16762845-001	27321	14	6
149755	47904	9	9	16762845-001	27321	16	26
149766	47904	6	11	16762845-001	27321	16	29
155282	47904	8	5	16163107-001	11479	16	27
155287	47904	9	2	16763204-001	11479	15	2
155312	47904	7	6	16763482-002	27321	14	11
155318	47904	7	5	16763482-002	27321	16	14
155321	47904	9	3	16763562-000	27321	14	1
155322	47904	9	1	16763562-001	27321	16	24
155329	47904	9	15	16164213-003	27321	11	20
155330	47904	9	16	16765383-002	23121	11	9
155340	47904	6	2	16765479-001	27321	11	5
155503	47904	7	1	16765848-002	27321	11	14
157809	47904	9	20	16765868-002	27321	11	2
157830	47904	7	7	16765482-001	17479	15	5
157631	47904	9	19	16766354-004	27321	11	13
157838	47904	9	13	16766471-004	27321	11	12
157841	47904	9	11	16766450-004	27321	11	17
157042	47904	9	8	16766483-002	27321	11	24
157887	47904	8	13	16766484-002	27321	12	6
157894	47904	8	8	16766498-001	27321	11	18
157895	47904	8	7	16766588-004	27321	11	3
157897	47904	7	6	201-362	99176	18	3
157647	47904	8	3	2233	71279	3	3
1578S7	47904	15	9	230	80113	4	16
157S04	47904	8	19	230	80813	4	25
157432	47904	8	1	308	27321	11	25
157992	47904	8	4	308	27321	15	23
160402	47104	8	6	309	21321	3	13
161121	47904	8	15	31-550	73734	6	28
16121601-001	17419	15	11	371TC	05616	6	29
16304884-001	17479	15	18	38-125	88421	18	1
163151	47904	9	18	4-80A1X3-161	99177	17	9
113114	47904	9	12	5-16D1AX21	99176	6	9
16731069-001	11479	15	16	5-34-PB	75543	17	15
16738069-002	27321	11	22	5103-15	79136	6	20
16731785-002	27321	11	21	5131-37	79136	6	27
1674213-002	11479	15	19	571-248	99176	6	26
16750036-028	27321	14	10	588-004	99176	2	8
16750045-009	17479	15	14	588-005	99176	2	12
16750409-017	17479	15	10	588-018	99176	2	14
16155813-002	17321	11	10	568-032	99176	18	20
16756377-023	27321	12	3	5a8-033	99176	17	24
16756107-002	17479	16	15	588-034	99116	1	3
16756808-002	27321	12	7	588-035	94176	17	1
16756808-002	27321	14	4	588-036	99176	1	2
16756808-002	27321	16	16	588-065	99176	2	2
16756809-002	27321	13	12	588-066	99176	2	4
16756809-002	27321	16	3	580-067	99176	2	5
16756821-002	27321	13	1	58-071	99176	4	15
16756821-002	27321	16	8	588-073	99176	4	24
16756822-001	27321	14	1	568-01087	99176	6	10
16756822-001	27321	16	19	588-056	99176	7	10
16756825-043	27321	13	3	586-098	99116	8	20
16756825-043	27321	16	12	568-101	99176	4	35
16756863-001	27321	13	11	588-103	99176	4	13
16756863-001	27321	16	1	588-105	99176	4	19
16756863-001	27321	16	25	588-106	99176	4	2
16757115-002	17479	15	8	588-107	99176	4	31
16757138-005	17479	16	10	568-110	S9176	4	29
16757150-001	27321	14	12	588-111	99176	4	12
16757150-002	17479	16	20	588-112	99176	4	20
16757757-001	17479	16	1	588-113	99176	4	30
16757964-001	27321	13	10	588-114	99176	4	27
16757964-001	27321	16	9	588-115	99176	1	4
16759746-001	17479	15	22	588-117	99176	4	26
16759752-001	17479	15	13	588-118	99176	4	28
16760006-001	27321	14	9	588-122	99176	2	13
16760006-001	27321	16	28	588-137	99176	18	10
16760023-001	17479	15	15	588-144	99176	2	3
16760048-001	17479	15	4	586-149	99176	17	5
16760585-001	27321	16	21	588-153	99176	17	7
16761246-003	27321	11	11	588-154	99176	17	25
16761246-023	27321	11	6	588-155	99176	17	23
16761246-023	27321	15	6	5S8-180	99176	18	13
16761276-001	17479	15	20	581-181	99176	17	6
16761853-001	17479	15	17				

PART NUMBER	FSCM	FIG. NO.	ITEM NO.	PART NUMBER	FSCM	FIG. NO.	ITEM NO.
588-182	99176	18	18	586-269-30	99176	10	29
588-184	99176	17	2	588-269-31	99176	10	30
588-185	99176	18	8	588-269-32	99116	10	28
588-186	99176	17	4	588-269-33	99176	10	27
588-192	99176	4	23	588-269-34	99176	10	8
588-193	99176	4	14	588-269-35	99176	10	34
588-198	99176	1	2	588-269-36	99176	10	35
588-207	99176	5	2	588-269-37	99176	10	7
588-208-1	99176	5	1	588-265-38	99176	10	6
588-208-2	99176	5	3	588-269-39	99176	10	2
588-210	99176	5	4	588-269-4	99176	10	44
588-213	99176	4	17	585-285-40	99176	10	4
588-218	99176	2	1	588-269-41	59176	10	3
588-219	99116	3	7	588-269-42	99176	10	1
588-220	99176	3	8	588-269-43	99176	10	5
588-222	99176	6	19	588-269-44	99176	10	9
588-223	99176	6	14	588-269-6	99176	10	36
588-224	99176	6	12	568-269-7	99176	10	38
588-225	99176	6	24	568-269-9	99176	10	40
588-226	99176	6	32	588-270	99176	7	3
588-227	99176	6	4	588-272	99176	3	1
588-229	99176	3	12	588-289	99176	6	2
588-230	99176	6	35	588-291-1	99176	1	5
588-231	99176	6	7	588-299	99176	17	11
588-232-1	99176	3	5	588-259	99176	17	22
588-233	99176	3	2	588-345	99176	3	15
588-234	99176	6	33	588-346	99176	8	21
588-235	99176	6	34	568-348	99176	3	14
588-236	99176	6	22	588-350	99176	4	6
568-239	99176	17	12	588-351	99176	4	a
588-243	99176	17	8	588-352	91176	4	3
588-243-1	99176	17	16	588-354	99176	4	9
588-246	99176	17	10	588-356	99176	4	10
588-247	99176	17	21	588-358	99176	4	5
588-250	99176	6	1	588-387	99116	4	21
588-251	99176	6	8	588-59176	99176	7	2
588-252	99176	6	21	588269-5	99176	10	31
588-257	99176	6	6	6-32	99176	17	26
588-259	99176	6	30	6-32	99176	18	4
558-268	99176	3	11	6-32X5-161TY98-F	99176	4	36
588-268-8	99176	10	39	6TY9FA	70892	3	16
588-269	99176	1	1	6X5-1-21	70092	3	17
588-269-1	95116	10	43	600	17479	15	1
588-269-10	99116	10	19	651-53J	99176	6	23
588-269-11	99176	10	18	700	27321	11	1
588-269-12	59176	10	20	73000020-002	27321	11	19
568-269-13	99176	10	17	73000022-004	23721	11	8
585-269-14	99176	10	16	73000023-004	27321	11	4
588-269-15	99176	10	15	73000023-004	27321	15	3
588-269-16	99176	10	22	73000042-026	27321	11	23
588-269-17	99176	10	23	73000115-001	23721	11	15
588-269-18	99176	10	14	73000116-001	27321	11	16
588-269-19	99176	10	21	73000345-001	27321	12	4
588-269-2	99176	10	42	73000346-002	27321	12	1
588-269-20	99176	10	13	73000372-102	27321	12	2
588-269-21	99176	10	24	73000400-001	27321	11	26
588-269-22	99116	10	12	73000541-001	27321	12	5
588-26-223	99116	10	10	73000863-073	27321	14	2
588-269-24	99176	10	11	73001039-004	27321	11	7
588-269-25	99176	10	26	76121	47504	8	18
588-269-26	99176	10	25	8-32	55176	18	12
588-269-27	99176	10	32	8-32SST	83355	4	11
588-269-28	99176	10	33	8064-25-00	02768	4	7
588-269-29	99176	10	31	83001	92219	17	17
588-269-3	99176	10	41				

NATIONAL STOCK NUMBER INDEX
LATEST NATIONAL STOCK NUMBER ASSIGNMENTS

STOCK NUMBER	FIG.	ITEM	STOCK NUMBER	FIG.	ITEM
5905-00-104-8345	6	17			
5905-00-106-1356	13	2	5905-00-156-0435	18	16
5355-00-135-4386	4	16			
5355-00-135-4386	4	25	5360-00-438-8885	10	27
5905-00-141-0717	16	5	5310-00-481-6516	4	11
5905-00-141-1073	14	3			

LATEST PART NUMBER ASSIGNMENTS

PART NUMBER	FSCM	FIG. NO.	ITEM NO.	PART NUMBER	FSCM	FIG. NO.	ITEM NO.
R0R07G152JS	81349	13	2	R0R20G564JS	81349	14	3
R0R07G473JS	81349	16	5	R0R42G390JS	81349	18	16

ADDITIONAL LATEST NATIONAL STOCK NUMBER ASSIGNMENTS

STOCK NUMBER	FIG. NO.	ITEM NO.
5905-00-822-4861	16	23
6760-00-983-3980	2	3

ADDITIONAL LATEST PART NUMBER ASSIGNMENT

PART NUMBER	FSCM	FIG. NO.	ITEM NO.
R007GF156J	81349	16	23

By Order of the Secretary of the Army:

BERNARD W. ROGERS
General, United States Army
Chief of Staff

Official:

J.C. PENNINGTON
Brigadier General, United States Army
The Adjutant General

Distribution:

Active Army:

- | | |
|------------------|---------------------------|
| USAINSCOM (2) | Ft Monmouth (HISA) (33) |
| COE (1) | Fort Bragg (5) |
| TSG (1) | Fort Campbell (5) |
| USAARENBD (1) | Fort Gillem (10) |
| DARCOM (1) | Fort Gordon (10) |
| TRADOC (2) | Fort Huachuca (10) |
| OS Maj Comd (4) | Fort Carson (5) |
| TECOM (2) | Ft Richardson (ECOM) (2) |
| USACC (4) | Army Dep (1) except |
| MDW (1) | LBAD (14) |
| Armies (2) | SAAD (30) |
| Corps (2) | TOAD (14) |
| USMA (2) | SHAD (3) |
| SvC Colleges (1) | USA Dep (1) |
| USASIGS (5) | Sig Sec USA Dep (11) |
| USAADS (2) | Sig Dep (1) |
| USAFAS (2) | Sig FLDMS (1) |
| USAARMS (2) | Units org under fol TO)E. |
| USAIS (2) | (1 cy each unit) |
| USAES (2) | 11-95 |
| USAICS (3) | 11-96 |
| MAAG (1) | 11-500(AA-AC) |
| USARMIS (1) | 29-134 |
| USAERDAA (1) | 29-136 |
| USAERDAW (1) | |

NG: State AG (3); Units - Same as Active Army except allowance is one copy per unit.

USAR: None

For explanation of abbreviations used, see AR 310-50.

RECOMMENDED CHANGES TO EQUIPMENT TECHNICAL PUBLICATIONS



THEN... JOT DOWN THE DOPE ABOUT IT ON THIS FORM, CAREFULLY TEAR IT OUT, FOLD IT AND DROP IT IN THE MAIL!

SOMETHING WRONG WITH THIS PUBLICATION?

FROM: (PRINT YOUR UNIT'S COMPLETE ADDRESS)

DATE SENT

PUBLICATION NUMBER

TM 11-5825-270-10

PUBLICATION DATE

23 Jul 81

PUBLICATION TITLE

Radio Frequency R-2176/FRN

BE EXACT... PIN-POINT WHERE IT IS

PAGE NO.

PARA-GRAPH

FIGURE NO.

TABLE NO.

IN THIS SPACE TELL WHAT IS WRONG AND WHAT SHOULD BE DONE ABOUT IT:

TEAR ALONG PERFORATED LINE

PRINTED NAME, GRADE OR TITLE, AND TELEPHONE NUMBER

SIGN HERE:

DA FORM 2028-2 JUL 79

PREVIOUS EDITIONS ARE OBSOLETE.

P.S.—IF YOUR OUTFIT WANTS TO KNOW ABOUT YOUR RECOMMENDATION MAKE A CARBON COPY OF THIS AND GIVE IT TO YOUR HEADQUARTERS.

DEPARTMENT OF THE ARMY
US ARMY AG PUBLICATIONS CENTER
1655 WOODSON ROAD
ST. LOUIS MISSOURI 63114

OFFICIAL BUSINESS
PENALTY FOR PRIVATE USE \$300

POSTAGE AND FEES PAID
DEPARTMENT OF THE ARMY
DOD 314



PIN: 033810